

USNAAS
Whiting Field



1963

©. INGULDSTAD (LANNY)

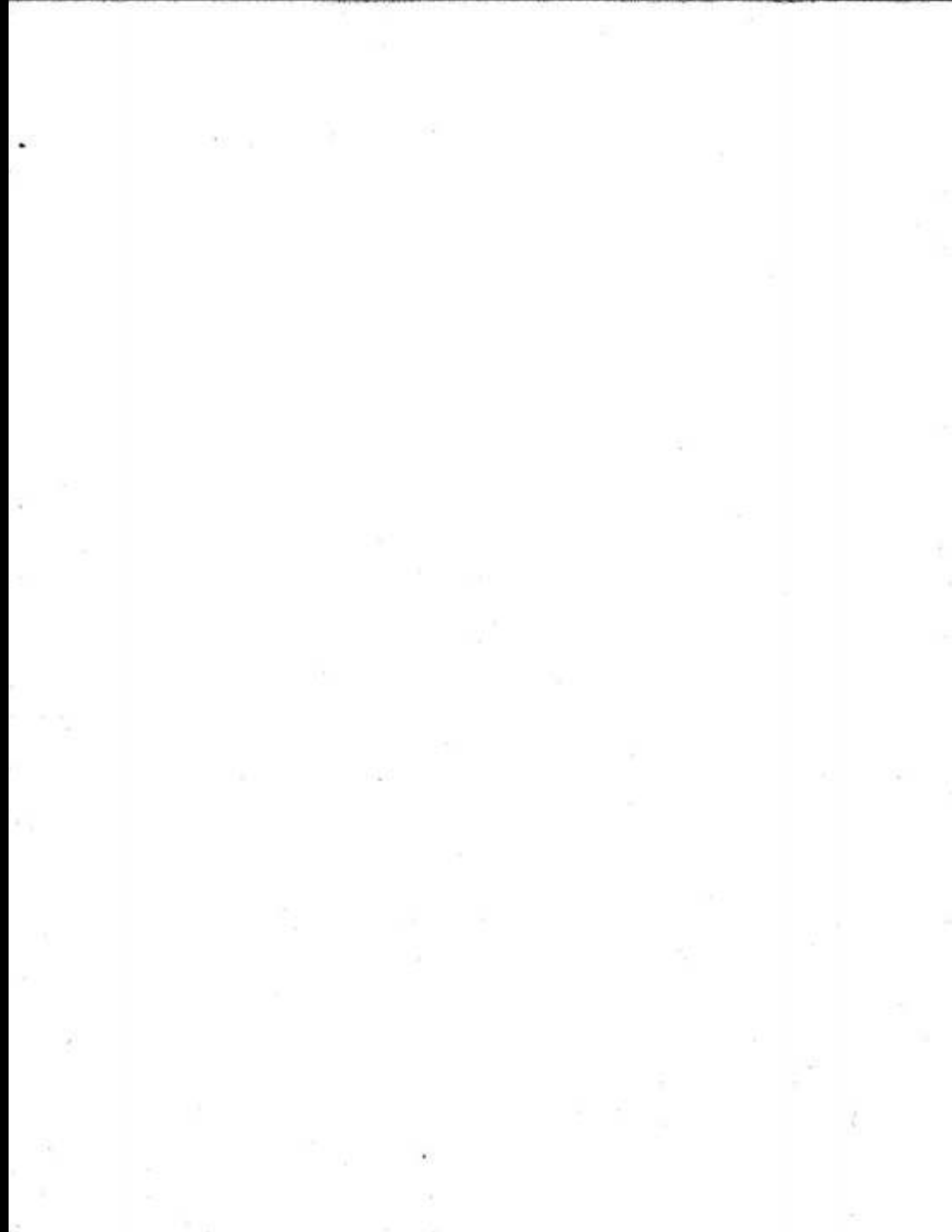
MARGUERITE WILLIAMS



TRARON THREE SIO

ARMY . NAVY

© 1998, 2000, 2001, 2002
2730 Florida, Baton Rouge, LA





1943

20TH ANNIVERSARY

1963

USNAAS

WHITING FIELD

MILTON

FLORIDA



1943

1963

USNAAS WHITING FIELD

Since July 1943 thousands of flight students and their instructors have walked the flight lines of Whiting Field—preparing themselves to become our nation's first line of defense. These men have won wars, and they have prevented wars. Whiting has a proud history and tradition—and our freedom is her story.



Since its commissioning in July of 1943 Whiting Field has played an important role in the training of pilots for America's fleet. At the present time it provides facilities and support to Training Squadrons TWO, THREE and SIX.

These operational squadrons are based at the two separate air fields located on the station. VT-2 and VT-6 make their home at North Field and VT-3 is located at South Field.

During WWII naval aviation cadets and officer students received training in instruments and radio at Whiting.

With the cessation of hostilities, medium and heavy bombers were based here for almost two years. It was during this period that Whiting became a Naval Air Station and was under the Naval Air Advanced Training Command.

In 1948 the field reverted to an auxiliary status and was returned to the Naval Air Basic Training Command.

During 1949 and 1950 the famed "Blue Angels" made their home at Whiting and also the Navy's first jet training unit, JTU-ONE.

With the outbreak of the Korean Conflict and the resultant step-up of aviation training, Whiting was devoted entirely to the primary phase of training.

During the eight years, from May 1948 until October of 1956, when primary training was conducted at Whiting more than 18,000 students completed that phase of their instruction here.

In October of 1956 the Instrument - Formation phase of basic flight training was moved to Whiting from Saufley Field and in turn Saufley took over the job of teaching Primary.

Still another phase was added to the Whiting syllabus in December 1959; Multi-Engine Training which had formerly been conducted at Sherman Field, was moved to Whiting.

On May 1, 1960 Basic Training Groups TWO, THREE and SIX were redesignated and commissioned Training Squadrons of the same number. The commissioning caused no change in the flight training mission; they continued to teach instruments, formation and multi-engine flying.

VT-2 and VT-3 each have approximately 150 officers and 650 enlisted men. VT-6 has approximately 50 officers and 175 men.

To furnish the academic training, messing, berthing, medical and dental treatment and other support needed by these squadrons, Whiting has approximately 85 officers and 800 enlisted men assigned to the "home" base.



CAPTAIN KENNETH WHITING, USN

NAVAL AVIATOR #16



CAPTAIN KENNETH WHITING

Captain Kenneth Whiting, after whom the U. S. Naval Auxiliary Air Station Whiting Field was named, was an early pioneer in aviation. He was taught to fly by Orville Wright and was awarded naval aviator certificate No. 16.



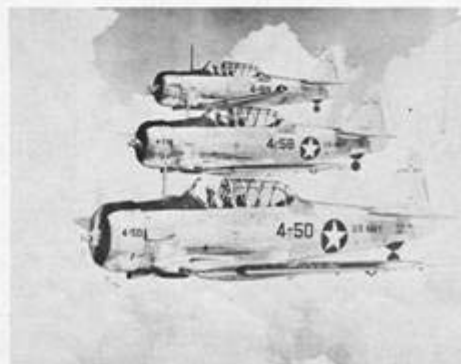
He commanded the first aeronautical unit sent from the United States to reach France in World War One. After WWI, he helped fit out the first experimental aircraft carrier USS Langley, and served as executive officer when she was commissioned.

He also helped plan and fit out the USS Lexington and USS Saratoga.

Captain Whiting was graduated from the Naval Academy in 1905 and remained on active duty until his death in April 1943.

He was awarded the Victory Medal, Overseas Clasp, the American Defense Medal, and the Legion of Honor, rank of Chevalier, by the government of France.

For meritorious service in World War I he was awarded the Navy Cross.





TRAINING THE WORLD'S FINEST AVIATORS



Vice Admiral Fitzhugh
Lee, USN
Chief of Naval Air
Training



Rear Admiral Magruder
H. Tuttle, USN
Chief of Naval Air
Basic Training

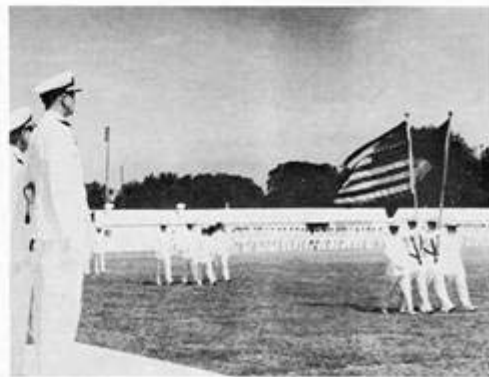
A Naval Aviator is not made overnight. He is the result of the combined efforts of hundreds of people and hundreds of hours, both on the ground and in the air. This then is the story of the blending of man and machine into a finely tuned weapons system, and it is the story of the Naval Air Basic Training Command.



U.S. NAVAL SCHOOL PREFLIGHT



Here is where the metamorphosis begins. The student sheds his civilian life and learns the ways of the Navy. Mentally and physically he soon adapts to the new routine.





VT-1 NAAS SAUFLEY



One of the greatest thrills in the life of an aviator is his first solo flight. Preparing the student Naval aviator to safely accomplish this feat is a prominent task of Training Squadron ONE (VT-1) at the Naval Auxiliary Air Station, Saufley Field.

Upon completion of Pre-Flight school at NAS, Pensacola, all flight students report to the Commanding Officer NAAS Saufley Field where they begin their primary flight training. The primary flight syllabus is programmed for eight weeks. During the first week at Saufley the student spends all day in ground school receiving a thorough indoctrination of what will be expected of him in the primary flight phase. Beginning the second week the student is assigned to Training Squadron One for a half of each day where he meets his flight instructor and begins his primary flight training in the T-34 Mentor.

Flight Training at VT-1 is divided into two stages of instruction, pre-solo and precision. In the pre-solo phase, the student receives thirteen flights. Eleven of the flights are dual instructional flights; the twelfth is a safe-for-solo check and number thirteen is a solo flight. The eleven dual instructional flights are devoted to preparing the student to solo safely; emphasis is placed on basic air work, proper landing techniques, and prevention of and recovery from unusual flight situations. When the student has thoroughly learned all the necessary fundamentals and has convinced his instructor he is safe-for-solo; he will fly his safe-for-solo check flight with an instructor other than his own. Based on long experience of training and checking students, the check pilot determines whether or not the student is safe to take it alone. To indicate success on this flight, a traditional "thumbs up" sign is given by the instructor. The student's last flight in this stage is his long anticipated first solo flight. Successfully completed, the student joins the rank of an elite group.

Precision stage is the next phase taught the student. This stage consists of ten flights; five dual, four solo flights, and a final Primary Stage check flight. The student is introduced to different acrobatic maneuvers, with emphasis placed on precision flying, basic air work and landings.

With the completion of Primary Training, the student has successfully taken a big step in accomplishing his goal. From NAAS Saufley, the students selected for basic jet training are transferred to the Naval Auxiliary Air Station, Meridian, Mississippi. There they receive basic jet training with either VT-7 or VT-9 in the T2J.

The student continuing propeller-driven aircraft training reports to Naval Auxiliary Air Station, Whiting Field, Milton, Florida where he receives his flight training in VT-2 and VT-3 flying the T-28 Trojan. Although the new fledgling is still quite far from his "Wings of Gold", many of the experiences he has encountered and the habits he has acquired at VT-1 will remain with him throughout his flying career.





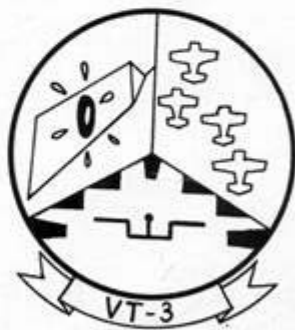
WHITING IS THE NEXT BIG STEP



Basic flight training of student naval aviators, including: T-28 transition, precision, acrobatic and basic instrument maneuvers.



Instrument training for pre-helicopter students, including: TC-45J transition and qualification for a standard instrument rating.



Basic flight training of student aviators, including:

Radio instrument navigation

Formation flying

Aerial gunnery

Training The World's Finest Aviators



CDR R. E. DUNCAN
Commanding Officer

BASIC TRAINING SQUADRON TWO



CDR J. P. BORDELON
Executive Officer

THE "DOER BIRD"
WATCHES OVER
HARD WORK . . .



. . . AND
HARD
PLAY







... Preflight



Brief ...



Then go!



Later ...



No fair peekin'





VT-2 pilots fly the busiest skies in the nation—but not all the activity is in the cockpits.





Fair weather or foul — these are the men who keep them flying

The Riggers



Fill 'er up



Jackets



Flight Support

Material





MEANWHILE BACK AT
THE BIRD FARM...



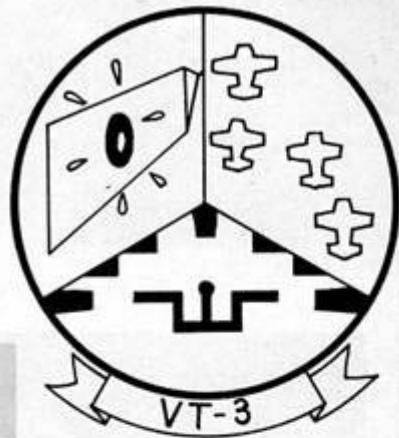
BASIC TRAINING SQUADRON THREE



CDR H. H. Osborne
Commanding Officer



CDR K. J. Cory
Executive Officer





First ...



Checking in at Admin



Next ... Links



... Study



... Lectures

Scuttlebutt while we wait



Then ...

... Launch everything!



Briefing



A good 'chute



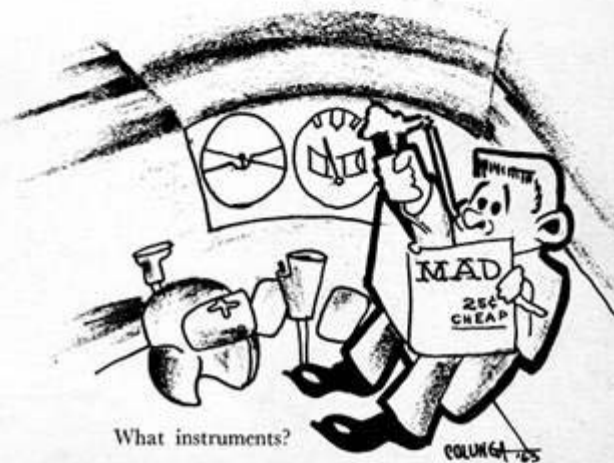
Logging out



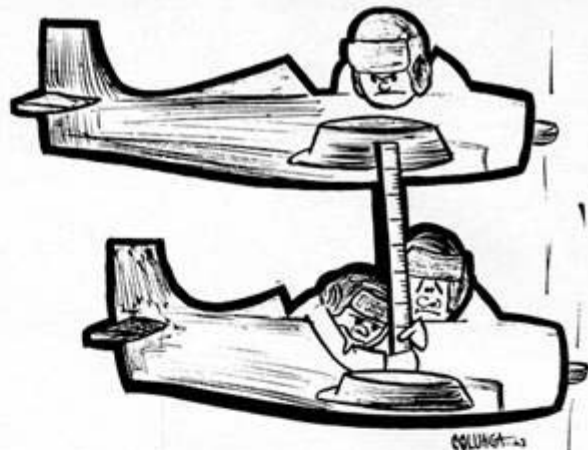
A careful preflight



"Ready, Sir!"



What instruments?



ALSO
WE
HAVE...



Formation

Night-fly lectures



... and those cross-countries!

Load 'em up



Head for the Gulf...



...and let 'em have it!



Then we count our misses!





... debriefing



Now time for ...



... maintenance



... more maintenance

... and



... paper work!



VT-5 NAAS SAUFLEY

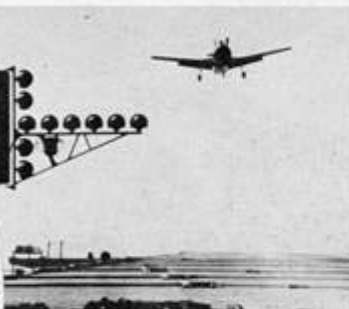
Training Squadron Five is the last stop for students going through the prop phase of the Basic Training Command. Based at NAAS Saufley Field the squadron gives fledgling aviators their original carrier qualification landing aboard the USS Lexington. To achieve these landings the students, flying the tail hook equipped T-28Cs, must complete 13 hops of Field Carrier Landing Practice utilizing the Mirror Optical Landing System.



Practice makes perfect



we make it!



So, here we go, and

Just like practice!



"The Navy's
only Helicopter
Training Squadron"

Advanced trainer
UH-19F Sikorsky

HT-8 ELLYSON FIELD



Ellyson Field, the Navy's only training base for helicopter pilots in the Navy, Marine Corps, and the Coast Guard, is named for Commander Theodore G. Ellyson, who qualified for this honor in April 1911. It is located nine miles northeast of Pensacola on the Davis Highway (Alcaniz Street extended) near the intersection of US 90 and US 90 Alternate.

The training cycle as it is now presented to the student consists of an extensive ten week training course, which includes ground school instruction in rotary wing aircraft principles, 30 hours of basic instruction in the Bell TH-13M (HTL-6) single rotor helicopter, and 30 hours advanced training in an operational type helicopter, the UH-19F (HO4S), UH-25 (HUP), or SH-34G/UH-34D (HSS-1/HUS). The SH-34G/UH-34D (HSS-1/HUS) aircraft are programmed to completely replace the UH-19F (HO4S) and the UH-25 (HUP) in the near future and the flight training course is scheduled to be increased from 30 to 50 hours of advanced training.



ADVANCED TRAINING SQUADRON SIX



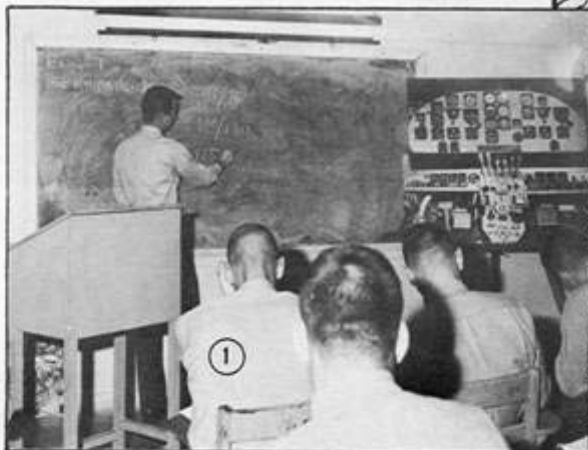
CDR H.C. Cyr
Commanding Officer

The mission of VT-6 is to support United States seapower by training prehelicopter student naval aviators to be the best instrument pilots in the world—ready to join the Fleet with a good grasp of the basic fundamentals of all-weather flight and modern instrument navigation.



The TC-45J "Twin Beech" aircraft is an excellent instrument flying platform. Its mastery is a real challenge.





First comes over 110 hours of classroom work in the fundamentals.

There are courses in meteorology, instrument navigation, and an exhaustive coverage of civil air regulations and OPNAV instructions

1. TC-45J Engineering
2. Then the flight phase.
Log in . . .
Log out!



Checking out navigation gear
before each flight



A good briefing before every flight



And away we go. Hmm! A little
foggy in drizzle, but that's ok!



Ready to fly? Not quite! A careful
preflight check lays the ground
work for a safe flight





Taxiing is easy . . . once you know how . . .



Lift off . . .



Back for a "low visibility approach . . ."

which leads to this . . .



and home.



Careful attention to the "yellow sheet"

The fun is just beginning.



At VT-6 we learn a lot about fleet squadron operations . . . we work hard!



A squadron needs a lot more than airplanes, pilots, and maintenance. You have to schedule . . . administrate . . . and relax too!



Preventive maintenance and quality control are the keys to high availability. Complicated trouble shooting gets attention from the experts.





WE WIND UP WITH AN INSTRUMENT
CROSSCOUNTRY FLIGHT. . .

1. PLANNING
2. ENROUTE AND TERMINAL WEATHER
BRIEFING. . . THEN
3. LCDR BATES, ADMIN OFFICER
4. AN AUTOMATIC WEATHER STATION
5. A LITTLE BOOK WORK. . .
6. . . A LITTLE HEAD WORK. . .
7. . . AND A LITTLE FINGERWORK!



NAAS WHITING FIELD



Robert E. Taylor
Captain, USN
Commanding Officer



M. F. Barfield
CDR
Executive Officer

ADMINISTRATION DEPARTMENT



EXECUTIVE AND ADMINISTRATION
OFFICERS



COMMANDING OFFICER AND
HIS SECRETARY



LEGAL OFFICER



R.J. FARROW
CDR
ADMIN OFFICER

R.L. PERRY
CDR
LEGAL OFFICER

M.H. RAY
CDR
CHAPLAIN

G.R. ANDRESS
LCDR
CHAPLAIN

F.W. ELDRIDGE
LT
PERSONNEL

G.A. FLEMING
LT
SERVICE INFORMATION

R.J. EDGER
LTJG
CHAPLAIN

R.L. HAYES
LTJG
COMMUNICATIONS

G.D. HOOPER
LTJG
LEGAL ASSISTANT

LEGAL OFFICER

COMMUNICATIONS



G.M. BYHAM
RMC2
LEADING CHIEF

R.L. PALFREY
RMC2

R.R. OYENS
RMC2

G.C. HALSTEAD
RMC2

G.A. HERRN
RMC2

R.N. WALSH
RMC2

A.E. MURPHY
RMC2

J.E. STRONG
RMC2

PERSONNEL



L.L. WISE
PMS2
SUPERVISOR

G.R. SARAGUSTIN
PMS1

L.E. STARS
PMS1

A.W. WAGGE
PMS1

R.L. POWELL
PMS1

R.R. TAYLOR
PMS1

J.A. CURRY
SN

F.A. WAGNER
AA

CHAPLAIN



I & E OFFICE



L.D. STEG
ADM2

F.J. DAYTON
PMS2
SUPERVISOR

R.F. REESEN
PMS1

R.R. HAYD
PMS1

R.L. BURN
PMS1

R.M. WISNIEWSKI
PMS1

M.E. JENNINGS
SN



COMMUNICATIONS OFFICER



ODD'S OFFICE



SERVICE INFORMATION OFFICER



INFORMATION AND EDUCATION



EDITOR WHITING TOWER



PERSONNEL

O O D



R.W. MC MILLER SMC
S.D. LAWSON AA
M.R. MCCUBBIN AN
C.A. ROWE AA
S.D. SMITH YA

M A A



J.C. HOLLY AMCS
D.P. LEE BTJ



J.M. PATTERSON BMT
S.A. FERSON BTJ
R.R. FOLEY SMC
W.B. JACKSON BMS
S.J. BOOM ENJ
S.E. SCHOUTEN BMS
J.D. STEELE BMS
M.L. THOMAS BMS
V.R. WINKLER BMS



L.N. CHAPMAN BMS
R.P. HARDIN BMS
J.E. SMITH BMS
J.B. MEHALIC FN
S.L. MYERS AA
A.P. REITZLER AA
R.W. ROENLY AA
L.L. BLANCHARD SMC
LEADING CHIEF

POST OFFICE



L.E. WILSON BMS
R.J. ANDREWS BMS
R.L. RICHARDS BMS
T.E. NOWAN BMS
V. VINTILA BMS
M.G. LEVERT BMS
M.E. ANDERSON BA
B.M. MAREY BMS

SERVICE INFORMATION OFFICE



J.H. KIMBELL YMS
LEGAL
J.H. LEMOS AA
MIXED ROOM
L.E. BAUER AA
J.S. CHARVAT AA
S.L. GARCIA BA
M. SEFFON AA
J.M. GRIFFITHS AA
S.S. MARTIN BMS

COMPARTMENT CLEANERS



P.M. MIECZKOWSKI AA
S.E. NAUMAN BA
S.A. OSTENDORFF AA
S.W. RUTHERFORD BA
W.L. SHAW AA
R.J. SHELTER BA
S.M. SMITH BA
G.C. SWENSON BA
K. TAYLOR BA



S.A. VOLSER AA
S.A. WARREN BA
L.P. WOLFF BA
E.J. BAILEY
J.B. BELSH
G.J. BROWN
C. CAMPBELL
W.J. DUFFY

CIVILIAN PERSONNEL



L.L. FULWIDER
L.H. GUYER
M.B. HOOGLER
R.D. PORTER
R.L. QUATTLEBAUM
T.A. STEWART
J.H. STINSON
M.B. VAUGHAN
A.C. WILLIAMS

SPECIAL SERVICES



BUCK WEAVER AND SPECIAL SERVICES OFFICER



WE'RE BROKE AGAIN



LIKE THIS...I



ONE FISH WRAPPER COMING UPI



MONDAY NIGHT AT THE MOVIES



A.L. ALTON
STC

G.W. CRAIG
ABCS

F.L. MATTHEWS
SMECA

G.T. LUSTER
EDI

R.F. BRAYER
MMI

A.S. WHEELER
SMI

G.A. ARENDTAR
MMI

A.W. ANDREWS
SNI

R.M. FABAN
STC



R.S. MELTON
STC

R.L. RAWLINGS
SNI

E.A. HALYDORON
SNI

R.F. BHOOP
MMI

G.J. VERPER
STC

G.D. AMES
AA

G.C. BEAN
AA

R.J. BROSBY
AA

T.L. CANNON
AA



D.H. DEUSTERMAN
SA

E.L. DE WEEB
AA

E.A. DURAN
AA

R.F. GÖYNEE
AA

E.W. GRAYER
SA

R.P. JEFFODAT
SA

C.E. JONES
SA

R.L. KEHRAN
AA

W.J. KIVAGOR
AN



R.R. LIPPE
AA

E. MATYSIAN
SN

A.C. MIREE
AA

T.L. MORSE
AN

R.D. NEWPORT
SA

W.D. BOKERS
AA

C.W. STUBENVOLL
AA

R.H. TRIPLETT
AN

THERE'S MORE TO WHITING THAN MEETS THE EYE



Here at Whiting there are those who seldom gain recognition yet whose everyday efforts form the very core, the backbone of our operations. These are the people whose services have become so much a part of our lives that we tend to take them for granted. Yes, without the cooks, the barbers, the electricians, the laundryman, our well organized training program would turn to chaos.





I'VE GOT A PROBLEM...



TODAY'S MENU...



MANAGERS TOO HAVE PROBLEMS

BOQ



A.M. CAMACHO SOC LEADING CHEF
E.J. ABERNORNIK SOC
J.R. JOHNSON SOC
L.A. ARDIN SOJ
E.R. BUTTLER SOJ
A.A. CALLASTA SOJ
E. HUFF SOJ
N. CROWDY SOJ
C.S. GREEN SOJ



L.L. HANDEVAN SOJ
L.A. VIADO SOJ
V.A. CORTIZ SOJ
E. MORRIS SOJ
J. ROYAL SOJ
M.L. RUSSELL SOJ
E.J. THOMAS SOJ
F.P. TORACIO SOJ
W.M. ARIAS TN



S.K. BARNETT AA
V.R. BARELA TN
F.L. BAUTISTA TN
E.R. BRIZE TN
P.T. BURADA TN
J.Y. CASTRO TN
C.B. ELLAZAR TN
D.O. ESTOQUE TN
A.S. FARINAS TN



S.P. FLORES TN
J.C. GARCIA TN
M.A. GIBSON ATRAN
K.S. JAGRE TN
R. KIRKLAND TN
E.L. LAZA TN
R.O. LUNA TN
A.J. POWELL SA
D.C. RUIZORRILLA TN



S.A. SALES TN
P.S. SARRA TN
S.E. SARINO TN
D.C. SAYAS TN
M.A. TORRES TN
L.E. VENTURA, JR TN
R.L. WILBORN TN
D.L. WILLIAMSON TN



SEEMS IN ORDER...

VIGILANCE



SECURITY OFFICER



"FIRE ANYONE?"

SECURITY DEPARTMENT



S. FENERTY
MAJOR, USMC
SECURITY OFFICER



J.W. MC KEE
LT, ASSISTANT
SECURITY OFFICER



J.A. WRENN
SMSGT
CPO IN CHARGE



R.F. KENT
ABCS



A.C. MACLEAN
ABCS



R.R. PITTMAN
ABCSA



H.W. BAILEY
ABSI



J.W. BROWN
STI



J.E. COLEMAN
STI



T.A. DWYER
ENI



C.W. KESPER
STI



L.E. DUSCOVE
ABSI



R. DALYAN
ABSI



R.S. GOFFORTH
MMI



R.S. HOOVER
ABSI



R.A. HOWARD
MMI



R.S. JAY
ABSI



F. MORENO
SMTI



J.T. RICHARDSON
ABSI



W.E. WAGNER
SMTI



L.H. ARNOLD
ABSI



J.D. BRUCE
SMTI



S.L. CHANDLER
ABSI



S.L. CLYBURN
STI



W.J. BAILEY
MMI



S.R. GUSTAFSON
STI



S.C. JOHNSON
STI



E.H. MCCALLARD
STI



J.A. MOULDER
ABSI



J.C. MURRAY
ABSI



R.A. PERDUE
MMI



S.L. RUSHING
SMTI



W. SMITH
ENI



J.L. SULLIVAN
ABSI



M.G. TEDDER
SMTI



J.A. TEDESCO
ABSI



J.E. VALINSKY
ABSI



J.S. WOOD
ABSI



W.C. ARRINGTON
STI



U.W. BRACHMANN
ABSI



J.P. COOPER
ABSI



G.J. GORSKY FA J.M. HOLMES EN J. JORDAN EN W.H. PIPES EN M.V. ROWLAND, JR MM W. WALCZAK MA F.J. WILLIAMS ST A.E. ADAMS AA R.E. ANTHONY JR



R.M. ARASON FA L. AUGUST EN S.M. BARROWS, JR AA S. BAZAN FA J.L. BRADLEY FA W.R. BRAYTON AA W.G. CALHOUN SA R.C. CARSEL, JR SA S.B. COVEY AA



C.S. CRAWFORD AA J.R. CRAWFORD ABRAN N.L. CROOK SA J.M. CURRAN AA T.W. CURTIS AN J.K. DE BORO AA R.L. GRUM AA I. KACHELBANY AA P.L. EDMONDS SA



H.A. EDWARDS AA R.L. EVANS, JR SA F.P. FOWLER SA J.W. GALVAS ABRAN J.R. GRADLEY AA L.E. GRISBY AA R.C. HALE AA L.W. HARRIS FR S.C. HEAD SA



M.E. HOGA AA T.D. HOGUE AA E.R. KASNER SA Y.R. KATE AA J.R. LANG EN G. LEE AA S.W. LUDWIG SR T.A. MALONE AA L.L. Mc KEW AA



A.C. KECK SA M.R. MILLER SA J.E. MILLER SA S.L. MONROE SA S.L. OLSON SA S.H. PALMER AA G. REYNA FA W. RICHARD AA W.G. RIER SR



S.F. RIER, JR SA R.L. ROMAN AN L.R. ROSE AA S.R. RUBLE AA S.M. SIMPSON AN E.R. SPANROW AA J.L. STAMPS AA R.E. STRICKLAND AA M.L. TANDY AA



T.A. TARR AA R.L. TAYLOR AA J.M. TORRENTO SA S.S. WEEKS SA G.M. WESTHOFF AA E.M. WOOD AA G.D. WORMAN FA E.D. WRIGHT AA S.S. WYLIE AA



NOW ON THIS CHART...

WATCH THE LINE...



MEDICAL OFFICER



MEDICAL DEPARTMENT

PILLS, PILLS, PILLS....



R. R. MEADOWS, JR.
CAPT. SENIOR
MEDICAL OFFICER

R. L. HARRINGTON
LT. ASSISTANT
MEDICAL OFFICER

J. C. MORTON
LT.
FLIGHT SURGEON

G. A. TUBB
LT. ASSISTANT
MEDICAL OFFICER

R. E. DENISON
ENS. MEDICAL
ADMIN OFFICER



R. P. STRICKLER
ENS.



W. M. ANDERSON, JR.
ENS.

M. D. BARNER
ENS.

F. C. HALL
ENS.

J. M. BRIDSON
ENS.

G. D. BAYB
ENS.

R. W. HILEY
ENS.

P. R. MC ELROY
ENS.

C. W. WOODS
ENS.

R. H. BARKS
ENS.



B. DODDOR
ENS.

T. J. DOWLING
ENS.

R. R. HOLSER
ENS.

G. R. DEWALE
ENS.

L. E. CHILDS
ENS.

P. L. ROY
ENS.

R. S. SEIBERT
ENS.

W. L. REYNOLDS
ENS.

G. W. VASEL
ENS.



J. C. VINCENT
ENS.

T. E. WADDELL
ENS.

T. W. WELING
ENS.

R. D. ANDERSON
ENS.

J. C. ARMYSTRONG
ENS.

R. E. CASTANEDA
ENS.

T. R. KIMBALL
ENS.

W. C. LE BLANC
ENS.

V. G. MOORE
ENS.



J. A. ONDUSKY
ENS.

W. A. PRATT
ENS.

F. L. SUTYANSKI
ENS.

R. ROMANOWICH
ENS.

I. J. SLOUGH, JR.
ENS.

M. S. TALLEY
ENS.

F. WALTERS
ENS.

J. R. WERNERS
ENS.

R. L. ZOLL
ENS.

DENTAL DEPARTMENT



NOW THIS WON'T HURT



SHOULD WE?



V.L. ANDERSON
CAPT, SENIOR
DENTAL OFFICER

V.L. JOHNSON, JR.
CAPT, SENIOR
ASST'T DENTAL OFF

J.M. DRISCOLL
LT, ASSISTANT
DENTAL OFFICER

S.S. LUSH
LT, ASSISTANT
DENTAL OFFICER

W.G. WHEATLEY
LT, ASSISTANT
DENTAL OFFICER

D.A. CRAN
DTG
ADMIN BARRIERYANT

G.A. MOSS
DTCA

J.R. KELLY
DTG

S.M. TAPP
DTG

J.L. ALTON
SG

D.F. ARKELL
DA

W.R. BATTLETT
AA

A.V. BRILSTAD
AA

J.M. TAYLOR
SA

E.W. VESSEL
SG



LOOK HERE....!



OPEN WIDE

Industrial Relations Department



F.M. BANKESTER
IND REL OFFICER

W.A. SCOTT

E.J. SHEPHERD



HUI



GODD GOUGEI



A.T.O. OFFICER



ACADEMIC TRAINING DEPARTMENT

LET'S SEE...64,48?



| | | | | | | |
|---------------------------------------|--|--|---|-----------------------------------|---------------------------------|--------------------------------|
| S.H. BOWEN CDR TRAINING OFFICER | A.R. WILLEY LEDR, ASSISTANT TRAINING OFFICER | F.W. SLAKE LEDR, STUDENT CONTROL OFFICER | R.E. JANDUSCH LEDR, TRAINING AIDS OFFICER | M.E. TAYLOR LEDR INSTRUCTOR | J.D. ARNOLD LT INSTRUCTOR | S.T. BEARD LT INSTRUCTOR |
|---------------------------------------|--|--|---|-----------------------------------|---------------------------------|--------------------------------|



| | | | | | | | | |
|---|----------------------------------|--------------------------------|--|--------------------------------|--|----------------------------------|-------------------------------|----------------------------------|
| R.V. BENDISOLI CAPTAIN, USMC INSTRUCTOR | W.S. BRADLEY LT INSTRUCTOR | S.W. DAVIS LT INSTRUCTOR | J.A. DE SALVO CAPTAIN, USMC INSTRUCTOR | L. DIAMOND LT INSTRUCTOR | M.A. DYKE CAPTAIN, USMC INSTRUCTOR | C.C. GREGORY LT INSTRUCTOR | G.W. HOLT LT INSTRUCTOR | R.S. JACKSON LT INSTRUCTOR |
|---|----------------------------------|--------------------------------|--|--------------------------------|--|----------------------------------|-------------------------------|----------------------------------|



| | | | | | | | | |
|----------------------------------|------------------------------------|-----------------------------------|---------------------------------|--------------------------------|---------------------------------|--|------------------------------------|---------------------------------------|
| W.E. JOHNSON LT INSTRUCTOR | J.D. MACARTHUR LT INSTRUCTOR | R.P. Mc TIGHE LT INSTRUCTOR | R.A. MURRAY LT INSTRUCTOR | W.F. REICH LT INSTRUCTOR | S.R. TABURN LT INSTRUCTOR | R.L. VASS CAPTAIN, USMC INSTRUCTOR | W.C. ZIMMERMAN LT INSTRUCTOR | L.R. KILPATRICK LTJG INSTRUCTOR |
|----------------------------------|------------------------------------|-----------------------------------|---------------------------------|--------------------------------|---------------------------------|--|------------------------------------|---------------------------------------|



| | | | | | | | | |
|--|------------------------|------------------------|----------------|-------------------|-------------------|------------------|--------------------|-------------------|
| S.J. COLARUSSO TSG LEADING CHIEF | A.G. PARRS, JR TSGA | S.L. RICKETSON RMGA | F. DIAZ TSG | R.E. GROSS TSG | G.G. HOWES PMS | R.H. KING TSG | W.C. CARTER TSG | L.B. EVANS TSG |
|--|------------------------|------------------------|----------------|-------------------|-------------------|------------------|--------------------|-------------------|



| | | | | | | | | |
|--------------------|-------------------|-----------------|--------------------|----------------------|-----------------------|--------------------|-------------------|-------------------|
| R.R. FLENER TSG | S.T. SMITH TSG | S. SHOCK TSG | M.G. WATSON TSG | M.L. ANDERSON TSG | J.D. KIMMERMAN TSG | R.E. CARTER PMS | W.D. CROSS TSG | S.E. FAZEL TSG |
|--------------------|-------------------|-----------------|--------------------|----------------------|-----------------------|--------------------|-------------------|-------------------|



THEORY OF FLIGHT



AERODYNAMICS



HYDRAULICS



ENGINE



LEADERSHIP



WEAPONS ORIENTATION



R.A. FAZEL
TSS

S.Y. LYNDK
TSS

W.E. MAURICE
TSS

W.R. MCDOWELL
SAS

L.L. MERRIS
TSS

J.E. NICHOLSON
TSS

J.A. REYNOLDS
TSS

T.E. RICE
TSS

C.S. ROBINSON
TSS



R.A. RUDOLPH
TSS

L.W. SHORT, JR
TSS

R.C. THOMAS
TSS

C.M. WILLIAMS
TSS

A.G. ABB
SR

C.E. CHENEY
TSAN

J.A. CREIGHTON
TSAN

H.L. DUDLEY
TSAN

J.J. EVANS
AN



K.C. RAINVILLE
TSAN

F.E. REAVIS
TSAN

R.W. ROBERTS
AA

M.J. SCHWARTZ
SA

J.A. STEINMAN
SR

J.A. TAYLOR
TSAN

S.B. WARNOCK
TSAN

W.W. WEST
SR

W.P. BAKER



F.M. BECK

J.P. GRAPEN

A.W. GALLAGHER

G.H. HOLMAN

B.M. HOPKINS

W.P. KEYSER

E.M. LAWRENCE

L.W. ROWLEY

M. WILLIAMS

OPERATIONS DEPARTMENT

ADMINISTRATIVE OFFICE



H. MORRISON
CDR
OPERATIONS OFF
R. MCARTHUR
MAJOR, USMC
AVC SAFETY OFF



S. F. LIEKE
LT, USMC
FLT SUPPORT OFF
W. L. PARKER
ADREA
S. R. WOLFE

AIR TRAFFIC CONTROL DIVISION



R. D. FEWETT
LT
AIR TRAFFIC OFF
A. J. MURLEY
ADCA
H. J. BLACK
SM1
C. D. ROYD
AC1
L. B. BURGESS
AC1
R. J. GILBERT
AC1
M. A. WILDT
AC1
R. J. SPEARS
AC1



R. W. LEEBRICK
AC1
D. F. BAILEY
AC1
D. L. SAUBIER
AC1
D. F. WEISS
AC1
S. L. BROADWELL
AC1
S. M. DE PHILLIPS
AC1
W. J. LADENBACH
AC1
J. E. SHELTERS
AC1
F. G. STYLL
AC1



CAR 54.....?



TO WHOM IT MAY CONCERN



BINGO!



RAIN, RAIN, RAIN



TAXI?



MAY DAY?..... WHERE?



GOOD MORNING!



BE MY GUEST



D---RUSTI



SMILE!



WHICH WAY'S NORTH



SURPRISE!!



MIRACLES WILL HAPPEN

AIR TRAFFIC
CONTROL
DIVISION
(CONTINUED)



R.W. ULLSTROM
ASA

D.L. CONLIN
ACAN

R.L. DAVIS
ACAN

G. HENDRICKS
ACAN

D.E. HORNBACK
ACAA

J.H. HUGHES
ACAN

T.E. JAMERON
ACAN

M. LITZER
ACAN



J.F. MEDOVITCH
ACAN

A.M. PELLEGRIN
AN

W.S. SMITH
ACAN

ORDNANCE
DIVISION



L.C. FENNERY
SME
DIVISION CHIEF

D.L. MC DANIEL
QM1

F.W. MC LAUGHLIN
TSM

L. COOKMAN
SMGE



D.E. HANSON
SMGE

PHOTOGRAPHIC
DIVISION



R. BERGQUIST
PNC
DIVISION CHIEF

A.O. BARRON
PWI

R.L. CRABTREE
PWI

D.E. HALL
PWI

L.R. GRAY
AA

P.S. FROST
AA



W.A. ROBERTSON
AN

G.M. SPARRS
PWAN

G.R. HUNT

FLIGHT
SUPPORT
DIVISION

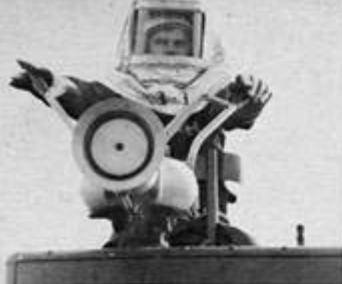


R.R. SUNYEA
ASMI

L.C. BROOME
AA

J.L. KICKS
AA

R.A. PRICE
AN



AND AWAY WE GO...



A LITTLE WARM YOU SAY...



TOMORROW IS ANOTHER DAY



GUESS WHAT...



BEATS ME !!

GROUND ELECTRONICS
MAINTENANCE DIVISION



C. R. DODD
EWO/GROUND
ELECTRONICS OPF

C. L. DE LEMIRE
ETC
LEADING CHIEF

R. W. HAVEN
PFC

F. J. MC LEAN
ETI

R. E. OLIVER
ETI

D. W.
CHRISTENSEN
FTM



B. D. FINALE
ETI

B. K. JOHNSON
ETM

E. A. BUDDS
ETM

D. M. MC ALISTER
ETM

A. R. MC KENNA
ETM

W. L. MOYER
ETM

R. V. STONE
ETM

R. A. WALTERS
ETM

R. W. EMMKE
ETM



J. L. STRO
ETM

J. P. JONES
ETM

J. P. KATO
ETM

M. H. HURFES
ETM

A. D. GILLMAN

F. C. HERRANDEZ

METEOROLOGY DIVISION

F. A. BAKLISAR
LTJG, METRO &
PHOTO OFFICER



E. H. RUSSELL
ASG
DIVISION CHIEF

R. V. YOUNG
ASG

W. R. JOHNSON
ASG

J. W. GRACE
ASG

W. L. TOWLIN
ASG

T. H. BUREN
ASG

G. L. HETZLER
ASG

R. A. SHARBAZIAN
ASG

C. A. URSON
ASG



THINK WE SHOULD?



HOW MANY TODAY?



AH...HAVE A HEART!

AIRCRAFT MAINTENANCE DEPARTMENT



| | | | |
|--|---|--|---|
| S. B. MC KERRY SQW AIRCRAFT MAINTENANCE OFF | J. C. MATSON SQW ASSISTANT MAINTENANCE OFF | C. M. BENTON LT SHOPS OFFICER | R. M. GLEVELAND LT QUALITY CONTROL OFFICER |
|--|---|--|---|



| | | | | | | | | |
|-----------------------------|--|----------------------------|----------------------------|----------------------------|------------------------------|--------------------------|-------------------------------|----------------------------|
| R. E. SCHERMAN LT | S. L. SHUBER SQW ADVISOR BRANCH OFFICER | R. L. ARNOLD ATC | S. A. BAKER AGSC | C. N. BUSCH AMSC | J. W. DENHAM AMSCA | A. FLAHERS ATC | S. A. FRANKLIN AGSC | C. T. HUDSON AGC |
|-----------------------------|--|----------------------------|----------------------------|----------------------------|------------------------------|--------------------------|-------------------------------|----------------------------|



| | | | | | | | | |
|--------------------------------|----------------------------|--------------------------|-----------------------------|-------------------------------|---------------------------|----------------------------|---------------------------|------------------------------|
| L. A. JENNISON AMSCA | I. KOZENERI AGSC | V. B. LASS PMA | J. L. MURPHY AMSC | A. E. ROBERTSON AGC | J. W. SMITH WAC | J. W. BAKER AMSC | A. L. BEACE PMA | L. N. BLACKMON ATC |
|--------------------------------|----------------------------|--------------------------|-----------------------------|-------------------------------|---------------------------|----------------------------|---------------------------|------------------------------|



| | | | | | | | | |
|--------------------------|-------------------------------|------------------------------|-------------------------------|------------------------------|---------------------------|-----------------------------|-----------------------------|------------------------------|
| R. E. BUSH AGC | J. M. CAMPBELL AGSC | A. B. CARLTON AGSC | J. F. CHITWOOD AMSC | M. E. COCHRAN AMSC | S. A. EYER AMSC | F. B. FOLAND AMSC | F. N. GODDEN AMSC | W. F. KENNEDY AGSC |
|--------------------------|-------------------------------|------------------------------|-------------------------------|------------------------------|---------------------------|-----------------------------|-----------------------------|------------------------------|



| | | | | | | | | |
|----------------------------|-----------------------------|-----------------------------|-------------------------|---------------------------|-----------------------------|-----------------------------|-------------------------------|---------------------------|
| W. E. LIMER AMSC | A. L. MC LAKE AGC | S. J. MILLER AMSC | J. N. MOE AGC | B. T. MOORE AGC | W. D. MURDER AMSC | A. F. ROWDEN AGSC | F. G. SPALDING AGSC | R. STANLEY AGSC |
|----------------------------|-----------------------------|-----------------------------|-------------------------|---------------------------|-----------------------------|-----------------------------|-------------------------------|---------------------------|



| | | | | | | | | |
|----------------------------------|---------------------------|----------------------------|-------------------------------|-----------------------------|--------------------------|----------------------------|------------------------------|------------------------------|
| S. D. STUBBLEFIELD PMA | S. B. BUCK AGSC | C. L. CAREY AMSC | H. H. CLOUTIER AGSC | J. D. CONNELL AGC | R. J. COOK PMA | A. G. FRENK AGSC | J. J. GALLOWAY MSA | S. L. GARRETT AMSC |
|----------------------------------|---------------------------|----------------------------|-------------------------------|-----------------------------|--------------------------|----------------------------|------------------------------|------------------------------|



E. J. BISHOP DCJ
J. D. HALE AMEJ
F. E. HAMILTON PRE
G. W. HARDWICK AYI
S. P. JOHNSTON AEJ
J. A. MAGGIO ADWJ
C. E. MCCOY AMWJ
E. W. MUTTER NWJ
E. W. PAULS AAY



R. C. RABSDALE AEJ
L. W. RIDDLE ADWJ
G. W. ROWE AYI
R. C. SCHULTE YWJ
W. A. SCOTT AYI
W. B. WOLFE AMWJ
R. C. YATES ADWJ
J. L. ADAMS AMWJ
R. E. ALLEN AEJ



R. L. BENNETT AEJ
R. J. BLEICH AAY
R. S. BROWN AMWJ
R. C. BUDD ATWJ
J. R. CLAYTON ADWJ
G. A. CUMMINGS ADWJ
R. E. BERRICK ATWJ
S. T. DIXON ADWJ
R. B. GOODALE ADWJ



R. L. HUNT ADWJ
D. C. IVERSON AYI
R. H. LANNAN AMWJ
J. W. MATTERS AYI
G. A. MAYNE ATWJ
E. J. MEGHLEY AEJ
L. L. MILLER WSWJ
R. L. MINER AMWJ
T. C. SANDFORD ATWJ



V. SANYELIS ADWJ
J. A. SMITH ADWJ
J. A. SMOKE AEJ
J. W. STEWART ATWJ
G. P. TAYLOR AMWJ
S. S. WOLF AMWJ
S. H. ALEXANDER AMWJ
W. F. ALLEN AW
F. J. BIRKE AMWJ



M. J. BRITTY, JR AW
W. L. BRZGULIS AYAN
J. A. CAMPALONG AYAN
T. G. CHANEY AW
S. W. COWELL PRAN
S. B. CROCKER AMWJ
S. C. FAULIS AW
M. A. FERTIS AW
D. P. FREED AW



C. HARTMANN, JR AA
G. R. HITT AA
W. R. HIGAN AA
S. E. JACKSON AKAN
J. J. JACKSON PRAN
R. W. KELLEY AW
W. W. KNAPP AA
W. J. LINDSFORD AMWJ
J. C. MATHERY AA



R. D. RUSSELL AA
S. R. SEAT AA
S. P. STRICKLAND ATAN
W. A. THROSS AA
W. C. WALLER AMWJ
R. P. WHITE AKAN
F. D. WILLIAMS AA
J. D. PLEASANT
E. D. VILLARS



ON THE OTHER HAND

SUPPLY



BORRY - FULL UP!

DEPARTMENT



W. W. COLLIER
LCDR
SUPPLY OFFICER

M. L. RECTOR
CWO5E-4
COMMISSARY OFF

J. E. GRANT
AECM
LEADING CHIEF

A. F. BOWEN
CSC

W. BRUCE
ASCS

A. L. GOR
CSEA

W. B. FRYE
CSC

T. A. HENLEY
SAC

R. F. HOLE
SAC



A. LAUGHRIN
SBS

A. STEVENSON
SAC

R. R. BUDOTH
ASG

S. BLANKENSHIP
SAC

H. BOYD
SAC

R. A. DORSEY
SAC

G. S. FRETTE
SAC

J. F. HARRY
SAC

M. E. HEALING
SAC



A. D. JUSTICE
SAC

R. B. MC LAUGHLIN
SAC

F. A. POWELL, JR
SAC

J. W. SUMMERLIN
SAC

F. R. TAYLOR
SAC

F. THOMAS
SAC

W. D. BAILEY
SAC

J. J. BROCKOV
SAC

J. F. CAIN
SAC



S. E. CARTY
SAC

J. D. CARR
SAC

M. A. COBLE
SAC

J. CURTIS
SAC

M. EWING
SAC

A. B. HORTON
SAC

F. J. LA SANCE
SAC

G. L. LEE
SAC

R. G. LOWERY
SAC



M. A. ORDERS
SAC

R. L. OSBORNE
SAC

A. OSTERMAN
SAC

J. W. RANDALL
SAC

T. A. SHELDOVERE
SAC

R. L. THOMAS
SAC

A. R. TURMAN
SAC

G. L. WADE
SAC

E. SAWYER
SAC



| | | | | | | | | |
|---------------------|-------------------|------------------------|----------------------|----------------------|-----------------------|-------------------|--------------------|--------------------|
| E. F. BEAYER CS3 | W. H. BYRD CS3 | A. V. CARPENTER SA3 | S. A. CHAPMAN SA3 | A. R. COLLINS SA3 | E. R. COPELAND AS3 | G. L. GRAM AS3 | S. E. GOWEN CS3 | M. V. JOTTE SA3 |
|---------------------|-------------------|------------------------|----------------------|----------------------|-----------------------|-------------------|--------------------|--------------------|



| | | | | | | | | |
|--------------------|--------------------|---------------------|----------------------|----------------------|-----------------------|----------------------|-------------------|-------------------|
| W. M. FITTS CS3 | F. B. ROHAS SA3 | E. L. SERLEY CS3 | L. H. SHOULTS CS3 | S. E. STEWART SA3 | A. J. SULLIVAN MS3 | A. L. WHEELER SA3 | S. W. WISE SA3 | G. F. WOOD AS3 |
|--------------------|--------------------|---------------------|----------------------|----------------------|-----------------------|----------------------|-------------------|-------------------|



| | | | | | | | | |
|-----------------------|----------------|-----------------------|-------------------|-------------------|----------------------|-----------------------|---------------------|-------------------------|
| T. H. WOODRUFF AS3 | M. YORK MS3 | W. P. ARMSTRONG AA | G. D. ASPER AS | S. J. BACAN AA | F. A. BAUTISTA TW | A. D. BODAK, JR SA | G. F. BONNEAU AA | S. W. BRITTINGHAM AA |
|-----------------------|----------------|-----------------------|-------------------|-------------------|----------------------|-----------------------|---------------------|-------------------------|



| | | | | | | | | |
|---------------------|------------------------|------------------|-----------------------|---------------------|--------------------|-------------------------|---------------------|--------------------|
| S. W. COONRAD AA | E. L. CORTELLI AKAS | E. G. CUPP SA | S. D. DOMINGUEZ SA | M. L. DOWDNEY SA | J. R. GUCKEY AS | S. R. EDDINGFIELD AA | A. A. FARLAND AA | S. R. FLORES TA |
|---------------------|------------------------|------------------|-----------------------|---------------------|--------------------|-------------------------|---------------------|--------------------|

S.L. FRIED
SAL.R. GARNER
AAT.F. GEMMEL
AAC.W. GENTRY
ANS.R. GOODING
AAJ.D. GREEN
AAL.F. HARPER
AAANT.L. HARRIS
THH. HAYES
SAP.D. HISE
SAW.H. HUGHES
AAW.E. JAMES
AAW.E. JETER
SAW.E. JETER
AAL.M. JOHNSON
SAK.P. JONES
SAM.W. JONES
SAA.C. KASBAUM
AAL.R. KENNY
AAD.D. KLEN
AAK.P. KRAMER
SAL. LAMERS, JR
AAR.J. LANE
AAJ.A. LAUSDAN
SAG.A. LINDOR
AAR.H. LENZIE
THJ.A. MANTOVI
AAC.R. MARCELINO
THJ. MARTIN
SHJ.C. MARVIN
THJ.W. MAYN
SAJ.E. MC COOK
ANA.H. MC MANSAMY
SAS.F. MEREE
AAJ.E. MERHAFFEY, II
SAH.A. MONTGOMERY
AAE.R. MURPHY
THR.J. NARLOCH
FAS.A. NEIGHBORS
SAY.B. PARKHABLE
TAE.A. PENILLAR
TAS.J. PETERSON
AAJ.L. PILLOW
AAC.L. PUKEY
SHAAF.J. RAKOWSKI
ANS.A. REID
THG. ROBERSON
THR.R. RODRIGUEZ
AAF.A. ROSECRANS
AAW.A. ROY
SAW.G. SELMAN
SAF.E. SILVA
AAR.D. SINS
SAH.H. SIRA
AAS.B. SCAAR
AAJ.W. SMITH
SAR.F. SHYDER
SAR.M. SOBO
SAS.C. STAFFORD
AAE.L. STEINER
ANA.J. SWANSON
FAL.W. TANGOFF
AAJ.L. TAYLOR
AAM.J. TENKAD
TAR. VIERA-MORALES
SAD.K. VOEGELE
SAM. VUKELICH
SAJ. WALTON
AAJ.F. WARE
AAW.G. ZULASKEY
AA

C.C. CONNOR

S. BEMMIS



THE COMPLAINT DEPARTMENT
IS IN PENSACOLA



BEANS ANYONE?



THAT WILL BE.....

NAVY EXCHANGE



V.S. WHITFIELD
MANAGER



C.L. ALLEN



N. ARRANT



F.L. BATES



A.A. BRAY



S.C. BRAY



C.J. BREWER



J.P. BROWN



V.E. CANNON



G. CARPENTER



A.F. CARR



H.L. COTTON



L.N. DAY



G.R. DENSON



F.L. ECKLE



H.E. FRANK



G. SANAY



C. DODSON



S.E. HOLLEY



M.M. HOLLEY



H. HOLMER



L.L. HOLMER



G.J. HOWARD



E.E. KOENEKE



L.V. LAFEYER



K. LAMBERT



A.L. LASSITER



M.A. MANN



L.L. MARSH



B. MCGARY



S.E. MCGRAY



T. MCDONALD



H.A. MCKINNEY



B. MEDLEY



W.A. MOLE



C.L. MOON



F. MORRELL



H. MURRAY



H.J. PARKER



A.V. PENNINGTON



M. PIRNKEY



V.M. POWERS



H.A. RICH



J.G. SHIMMONE



G.A. SPEARS



J.H. STEWART



L. WARDIN



M.E. WEIGHOLD



L. WILLIAMS



G. WRIGHT



V. YATES



SOUNDS GOOD!



NO1



WORK, WORK.....

PUBLIC WORKS DEPARTMENT



M.A. WHITENBURT
LCDR_PUBLIC
WORKS OFFICER

J.W. WEBB
LT.ASSISTANT
PUB WORKS OFF

C.S. STREET
ENS
HOUSING OFFICER

N.G. CRAWFORD
CWO
SHIP'S ENGINEER



J.P. MCCULLY
EOC
LEADING CHIEF

F.V. TAYLOR
ETS

W.D. DUMMINGS
ETI

J.H. DANIELS
EM

E.E. ELLIOTT
EM

D.R. BRIDGERS
ETI

D.R. EDWARDS
EM



L.W. JOHNSON
MM

E.E. KENNEY
MM

R.H. LEYER
EM

L.W. STARLING
EM

R.T. BARTLETT
AA

J.E. BOSTON
AA

J.R. BRYANT
AA

E.W. DOWNS
AA

J.J. FERRIS
SA

ADMINISTRATION



H.A. VODOVICH
ADMIN ASSISTANT

H.L. BLOCKER

H.E. BRYAN

A.A. BUTLER

H.H. HUFF

H.B. MC LAUGHLIN

J.A. MURPHY

ENGINEERING



J.E. MC DONALD
DIRECTOR

W.B. WERNER

HOUSING



F.J. SPINALE
MANAGER

L.D. WEAVER

V.R. WILLIAMS

MAINTENANCE CONTROL



S.L. LOVELLACK
DIRECTOR

L.H. SHILEY

C.S. HARTSFIELD, JR.

L.S. HEATH

V.M. JOHNSON

G.T. JONES

J. MARTIN

J.A. MC KENNEY

S.R. PENTON

MAINTENANCE
CONTROL
(CONTINUED)



U.E. REIMER



E.S. STEGARTY

MAINTENANCE



H.C. DUNAWAY
OF QUARTERMASTER



H. BROOKS
QUARTERMASTER
WOODSTRUCTURES



J.S. SHEFFIELD
STEEL, WAINY



G.C. CUX



J.E. EVANS

GENERAL
SERVICES



C.E. ADAMS



J.A. BLACK



H. ANTHONY



F. GULLIVER



B. DAVIS



A.W. DIXON



H.L. DIXON



R. GANZ, JR



L. HAMBAR



B. HARRIS



A. JERNIGAN



S. JOHNSON



R.V. LEWIS



J.L. NORPHARD



H. DOWLING



W.E. PHILLIPS



W.H. RUCK



A.C. TAYLOR



C.W. THOMPSON



E. WELCH



E.J. WYSSING



B.A. WRIGHT



CARPENTER
& MASONRY
SHOP



W.W. SATE
LOGGERS, CARPENTER



M.F. ADAMS



C. COBB





**CARPENTER
& MASONRY
SHOP
(CONTINUED)**



W.L. DANBEY F.R. FUDGA A.D. ELLMAN E. GOODEN A.L. HUTTO J.R. LESH A. LEWIS C. HANSEN



A.N. MOORE J.N. MORRIS E.L. RICHARDS H. RICHBURG R.L. WATSON C.R. WOLFE, JR. W.W. WOLFE J.T. WYATT

PIPE SHOP



D.L. BEARLEY LOGAN, MAIRY J.M. BRACKINS, JR. D.P. HALL J.R. HANLTON L.T. HAMMONDS W.R. KASE E.H. WOLFE

**ELECTRIC & REFRIG-
ERATION
SHOP**



E.E. CRUTCHFIELD LEADSMAN ELECTRICIAN



D.T. ALLEN E.N. BOGHER J.B. CATS L.W. CLEMENTS J.B. DU BOISE L.T. HARRIS, JR. W.A. JORDAN B. MC CRAW E.H. MC DANIEL

ELECTRIC &
REFRIG-
ERATION
SHOP
(CONTINUED)



C. SMITH J.M. TAYLOR E.E. THOMPSON E.O. WATFORD

PAINT SHOP



D.E. BAKER LOGAN, PAINTER F. BLACKMAN W.L. BOLTON



J.T. CLARK J.L. COBB W.H. COOK S.R. JONES H. LOWE C.B. LOWERY R.P. MARR G.W. Mc DURNONT R.L. Mc INNIS



SHEETMETAL
SHOP

L. SIMMONS V.F. WELLS



EMERGENCY
SERVICE

V. ATES S. BOWERS H.E. ELLIS J.C. WHITFIELD J.M. AVERY LOGAN, MAINT



S.B. ATES J.P. BOYETT S. BRYAN V.F. DE HASI L.C. LEE L. NELSON S.R. PAYTEN Z.L. WARD L.R. WILLIAMS

TRANSPOR-
TATION
MAINTENANCE

Expires
SEP 1975



L.J. BARNES R.E. BATTEN I.L. BIRN S.R. BILLEY A.J. HARRIS J.H. HARRIS W. NELSON A. POWELL



TRANSPOR-
TATION
OPERATIONS

F.S. ROWELL



R. BOLTON G.W. HINDPE J.P. LOCKETT

POWER
PLANT



H.B. BURROUGHS LOGAN, UTILITIES R.W. ADAMS J.G. CAMPBELL



JANITORIAL

V.O. CREWS A.W. MIXON R.L. PAYNE E. STEPHENS



C.D. HAY LEADSMEN, LABORER CLEANER S. BURNHIDE J.W. WILLIARD G.L. HOLLAND



E. JACKSON H. JACKSON A.F. JOWER H. KING J.L. LANGHAM J.W. LOWERY P.S. SPONES L. WALKER L. WEDDLY

TRAINING SQUADRON TWO



NUMBERS ANYONE?



ANOTHER BUSY DAY



RIGHT THERE!



P.E. DUNLAP
COW
COMMANDING OFF

S.P. BRIDGEMAN
COW
EXECUTIVE OFF

E.L. ANDERSON
LEON
ASSY'Y FLT LDR

D. FALKER
LEON
FLT LEADER



D.O. GAUSP
MAJOR, USMC
ASST TNG OFF

E.E. JACOBSON
MAJOR, USMC
FLT LEADER

E.M. BENKOWICZ
LEON
FLT INSTRUCTOR

C.S. SWESERT
LEON
ADMN OFFICER

R.L. WHEELER
LEON
FLT INSTRUCTOR

C.W. ANDERSON
LT
FLT INSTRUCTOR

C.R. ARNOLD
LT
STDS OFFICER

E.L. BAKER
CAPTAIN, USMC
FLT INSTRUCTOR

C.L. BETHRA
LT
ADM'XMAN OFF



E.W. BUSH
LT
FLT INSTRUCTOR

J.E. BRAY
LT
FLT INSTRUCTOR

D.E. CANADA
LT
FLT INSTRUCTOR

V.V. CARLOS
LT
FLT INSTRUCTOR

R.H. CHAPMAN
LT
FLT INSTRUCTOR

D.S. CHICCHIO
LT
FLT INSTRUCTOR

W.H. CLEANS
CAPTAIN, USMC
FLT INSTRUCTOR

J.F. DUNNINGMAN
LT
SCHEDULES OFF

A.P. GAWSON
CAPTAIN, USMC
FLT INSTRUCTOR



M.C. GUYO
CAPTAIN, USMC
FLT SAFETY OFF

S.C. HENRY
LT
FLT INSTRUCTOR

F.E. HENRY
LT
SCHEDULES OFF

S.F. FARRIS
LT
FLT INSTRUCTOR

A.E. FORD
LT
FLT INSTRUCTOR

F.E. FEEL
LT
FLT INSTRUCTOR

J.Y. GALLAGHER
CAPTAIN, USMC
FLT INSTRUCTOR

W.G. GAYWOOD
LT
FLT INSTRUCTOR

R.N. SPURTH
CAPTAIN, USMC
FLT INSTRUCTOR



T.R. GRIFFIN
LT
FLT INSTRUCTOR

R.W. HAINES
LT
FLT INSTRUCTOR

W.L. HANLEY
LT
SAFETY OFFICER

H.E. HOFF
LT
FLT INSTRUCTOR

D.G. RIPP
LT
FLT INSTRUCTOR

A.L. KNOF
LT
MAINTENANCE OFF

C.R. BRAYNAK
LT
FLT INSTRUCTOR

D.L. LAWRENSEN
CAPTAIN, USMC
FLT INSTRUCTOR





J.R. LORR
LT
FLT INSTRUCTOR



L.T. LOWE
LT
FLT INSTRUCTOR



H.D. MEIER
LT
FLT INSTRUCTOR



H.D. MILLER
LT
FLT INSTRUCTOR



C.R. MORGAN
LT
FLT INSTRUCTOR



T.W. NELSON
CAPTAIN, USMC
FLT INSTRUCTOR



E.A. OELWER
LT
FLT INSTRUCTOR



R.F. POSENING
LT
FLT INSTRUCTOR



E.A. PINDER
LT
FLT INSTRUCTOR



R.B. RICE
LT
FLT INSTRUCTOR



R.S. RUTHERFORD
LT
SUPPORT DIV OFF



A.F. SCHMITT
LT
SYSTEM OFFICER



N.P. SEARES
LT
AVIONICS DIVISION OFF



F.L. SOPER
LT
FLT INSTRUCTOR



R.R. SPENCER
LT
FLT INSTRUCTOR



G.L. STEVENSON
LT
MATERIAL OFF



G.M. SWENSEN
LT
FLT INSTRUCTOR



J.L. SZECSENYI
LT
FLT INSTRUCTOR



R.C. TODD
LT
FLT INSTRUCTOR



G.B. VETROVSKY
LT
FLT INSTRUCTOR



J.W. VOSS
LT
FLT INSTRUCTOR



P.B. WESTMILLER
CAPTAIN, USMC
FLT INSTRUCTOR



R.S. WHITE
LT
SYSTEM OFFICER



F.H. WOODS
LT
SYSTEM OFFICER



R.D. YEAGER
LT
LEGAL OFFICER



R.A. ZIMMERMAN
CAPTAIN, USMC
TEST COORDINATOR



R.R. ADOLPH
LTJG, ENLISTED
PERSONNEL OFF



J.W. ALTER, JR
LTJG
FLT INSTRUCTOR



J.R. DEL VECCHIO
LTJG
FLT INSTRUCTOR



W.E. DOUGLAS
LTJG
FLT INSTRUCTOR



J.J. GODDARD
LTJG
FLT INSTRUCTOR



D.S. HAMAS
LTJG
FLT INSTRUCTOR



J.M. HERRING
LTJG
FLT INSTRUCTOR



R.E. HOLDEN
LTJG
FLT INSTRUCTOR



R.D. KAPLAN
LTJG
FLT INSTRUCTOR



R.C. LUNSBERG
LTJG
FLT INSTRUCTOR



S.P. MARCH
LTJG
FLT INSTRUCTOR



M.R. MARLER
LTJG
FLT INSTRUCTOR



W.P. MCCARTHY
LTJG
FLT INSTRUCTOR



W.J. MC BAE
LTJG
FLT INSTRUCTOR



J.M. MEAD
LTJG
FLT INSTRUCTOR



R.R. WHERRY
LTJG
FLT INSTRUCTOR



G.E. YOUMANS
LTJG
FLT INSTRUCTOR



G.H. CALLEN
ENS
FLT INSTRUCTOR



R.A. DICKSON
ENS
FLT INSTRUCTOR



J.M. KILPATRICK
ENS
FLT INSTRUCTOR



G.W. LIVINGSTON, JR
ENS
FLT INSTRUCTOR



R.J. PACHEL
ENS
FLT INSTRUCTOR



J.A. TERRONE
ENS
FLT INSTRUCTOR



J.M. BARRON
AMCS
LEADING CHIEF



W.J. BATES
AMNCA
ADC



F.C. SOEZMAN
ADC



G.E. HARBISON
AMNCA



A.L. MYERS
ADC



E.L. HAGNER
ADC



E.E. JAY
AMNCA



R.P. JONES
ADC



E.J. LUMAN
AMNCA



H.C. MAY
ADREA



R.E. MCAFEE
AMNCA



R.W. METZ
AMNCA



W.M. MONKS
ADC



R.G. MUNTON
ADREA



F.A. NEYER
ATEM



R.S. ORR
ADREA



G.S. PIERCE
AMNCA



F. ATKINS
AEI



R.J. AMBERGER
EMM



W.D. ATKINSON
ADM



L.S. BLACKSTOCK
AEI



R.D. BROOKS
AEI





T.C. BRYANT
ADM1

E.W. BUTKIEWICZ
ADM1

P.J. CATANESE
ADM1

J.W. CATHEY
ADM1

G.I. CLARK
ADM1

W.D. CLEVELAND
ADM1

G.P. COLLINS
ADM1

J.H. COOK, JR.
ADM1

R. COOK
ADM1



T.R. DALTON
ADM1

W.M. DISMUKER
ADM1

E.L. DOUGLASS
ADM1

W.W. EATON
ADM1

W.E. ELROD
ADM1

R.D. EVANKS
ADM1

K. FORRESTER
ADM1

C.A. FORSTER
ADM1

L.J. GALLAGHER
ADM1



S.P. GAUSE
PM1

W.L. HAM
ADM1

A.D. HODGE
ADM1

J.T. HODDER
ADM1

G.F. JOHNSON
SM1

G. KRAUSE
ADM1

R.C. LEWIS
ADM1

E.L. LEWIS
ADM1

K.L. LOVE
ADM1



F.A. MARSH, II
ADM1

S.L. MAYNARD
ADM1

J.P. MC CABB
ADM1

G.R. MC KINNEY
ADM1

R.L. MELTON
ADM1

E.L. MYERS
SM1

G.V. NADROCKI
ADM1

W.M. NORMOYLE
ADM1

J.S. PESTLOUX
ADM1



J.W. POWELL
ADM1

J.W. QUIBOUCAVA
ADM1

A.C. REISBERG
ADM1

R.P. REYNOLDS
ADM1

R.L. ROBERTS
ADM1

R.L. ROWLEY
ADM1

R.L. ROYAL
ADM1

J.F. SCOTT
ADM1

R.M. SLEEPER
ADM1



R.P. SMITH
ADM1

W.E. SMITH
ADM1

G.C. SPENDER
ADM1

B.S. TAYLOR
ADM1

W.J. THOMPSON
ADM1

R.T. WIERICK
PM1

J.J. WITHERELL
ADM1

G.C. AMBUEN
ADM1

J.D. BAKER
ADM1



P. SARBASHO
ADM1

A.R. SARNETT
ADM1

S.F. SENBOW
ADM1

W.S. WOLLEN
ADM1

T.W. BOSTER
ADM1

E.E. BRYANT
ADM1

M. CALLOMAS
ADM1

A.M. CHAPPELL, JR.
ADM1

G.R. CHATTERTON
ADM1



S.M. CHESHIRE
ADM1

S.J. CICERO
ADM1

A.P. COLEMAN
ADM1

W.S. COOPER
ADM1

G.A. GAELEK
ADM1

G.A. GANER
ADM1

W.C. DAVIS, JR.
PM1

J.K. DEER
ADM1





WHAT MOUSE TRAP?



UP OR DOWN?



I HED 4441



GUARANTEED



ALLEY OOP!



R.M. FILER
ATC

W.F. FISHER
ADM1

A.L. FOWLER
NME

R.G. GEORGE
ADM1

T.P. GOWEN
ADM1

G.H. GUYER
ADM2

E.C. HALL
ATI

G.H. HARRIS, JR.
ADM1

W.B. HAYES
AEC



R.W. HAYES
ADM1



M.W. HENDERSON
ADM1



F. HERRANDEZ
AEC



R.L. HOUGHTON
AME1



G.H. HOYERSON
ADM1



G.L. HUTCHINSON
ADM1



R.D. JACOB
ADM1



J.P. JAYNES
ADM1



C.C. KEARNS
AME1



F.W. KERRS
ADM1



F.L. KESSELRING
ADM1



J.A. KOSI
ADM1



E.P. KRAMER
ADM1



J.L. LESKEY
ADM1



J.C. LOCKEY
ADM1



F.A. MADON
ADM1



G.F. MAXWELL
ADM1



L.W. McLAIR
ADM1



R.L. NEWELL
ATC



R.C. NORTON
ADM1



S. OWENS, JR.
ADM1



E.L. PERKINS
ADM1



R.A. PETERSEN
ADM1



R.D. POPHAL
AME1



C.E. REICHENBERG
YU



S.J. REND
ADM1





S.A. SEITZER
ADM1

R.L. SMITH
ADM2

P. SPINACH
ADM2

R.J. SWANN
ADM2

F.B. TAYLOR
ADM2

J.L. TENNANT
ADM1

S.A. ULMER, JR
ADM1

M.L. VAN BAILE
ADM2

J. VANDERGRAY, JR
ADM1



T.J. WALTERS
ADM2

L.G. WHEATON
ADM1

F.D. WINFORD
ADM1

R.H. WOODS
ADM1

R.B. WYNN
ADM1

F.E. ALLEN
ADM1

S.T. BALLARD, JR
ADM1

W.E. BARFIELD
ADM1

G.J. BELFLE
ADM2



K.L. BISHAN
ADM2

R.C. BRAMBERG
ADM1

R.E. BRANSTETTER
ADM1

W.H. BULMAN
ADM1

J.K. BURKE
ADM1

R.A. BURKE
ADM1

R.L. CARROLL
ADM1

A.L. COCK, JR
ADM1

G.B. CLARK
ADM1



J.R. CRISMAN
ADM1

J.R. DODDAD
ADM1

L.G. DOWNING
ADM1

S.E. EATON
ADM1

S.R. FOSSUM
ADM1

D.G. GREGORY
ADM1

J.P. HALBERT
ADM1

J.J. HAMMANN
ADM1



YOU MEAN THIS ONE?



JP-4?



AH PLEASE....





D.L. BAKER
AMS1

J. BARRER, JR
AG1

D.L. BIRDFIELD, JR
AE3

S.L. BOGAN
YNE

R.L. BRIDSON
AMS1

R.L. BUDDE
ADR1

A.V. JOHNSON
AMS1

L.J. KEETON
ADR1

J.M. MURTH
ADR1



S.B. LAWLER
ADR3

F.W. LENOIR
AE3

S.L. MARSHALL
ADR3

W.W. MARTIN
ADR1

P.E. MC ADAMS
AMS3

R.J. MC CLELLAND
AMS3

L.T. MC KINLEY, JR
AE3

H.W. MILLER
AT3

A.L. MILLS
AE3



R.L. MORRIS
AMS1

R.C. NORTH
AG3

C.W. ODOM
ATW1

R.E. O'NEAL
AE3

L.L. OSMAN
ADR1

W.H. POUNEY
AMS3

E.C. RAYNOR
DM3

J.W. ROOPER
AMS1

R.A. SELKAR
AG3



F.F. SENDALE
AMS1

R.L. SHROBACK
AE1

A.L. SMITH
AMS3

N.A. SMITH
AE3

C. SODENOWOFF
ADR1

R.E. SOWERS
YU3

D.C. SOUTER
AMS3

D.R. STERNLE
ADR3

P.G. STONELY
AMS3



R.C. TRULL
AMS3

D.C. UFF
ADR3

D. VANDYDELLS
ADR3

D.L. VAN NOSTRAND
ADR3

C. VANDAS
AMS1

C.H. WYTTON
AMS1

W.F. VAECK
PW3

E.O. ZUTTERMAN
AMS3

J. ADAMSON
AA



W.D. ANH
AA

D.L. ALCAJAR
AM

R.A. ALYSS
AA

D.L. ANDERSON
AA

D.W. AUBURN
AA

J.D. BALEY
AEAN

N.R. SAIRD
AN

J.L. BAKER
ADAN

R.S. BAKER
AN



J.A. BALLA, JR
AA

A.J. BARNES
AA

T.M. BARRICKMAN
AMSAH

J.F. BASS
AA

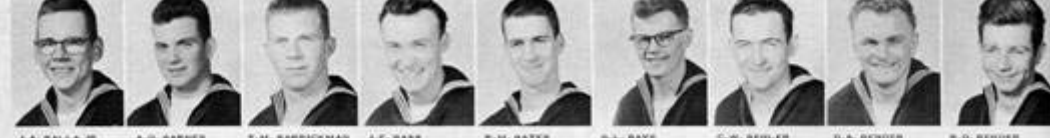
P.H. BATES
AA

D.L. BAYS
AA

C.W. BENLER
AMCAA

S.A. BENDER
AN

R.D. BENDER
AEAN



L.W. BENNETT
AN

R.D. BEND
ADRAN

R.F. BILLY
AMSAH

D.L. BESEL
AMSAH

J. BOLTON
AN

W.A. BOON
AA

J.M. BOULAS
SA

J.R. BONMAN
AA



L.W. BENNETT
AN

R.D. BEND
ADRAN

R.F. BILLY
AMSAH

D.L. BESEL
AMSAH

J. BOLTON
AN

W.A. BOON
AA

J.M. BOULAS
SA

J.R. BONMAN
AA





R.G. BOKKEL AA S.M. BOYD AA A.M. BRAYD AA L.W. BROOKING AA F.F. BUNCH AA R.J. BYRDE AA S.A. CAGANES AA E.A. CAPPS AA S.M. CARLAW AA



D.E. CARROLL AA S. CARTELLI AA E.F. CATHART, JR AA P.E. CECILSKI AA C.R. CHADWICK AA M.D. CHENault AEAR W.P. CHRYSTOWICZ AA C.E. CLARK AA R.E. CLARK AA



J.V. COLANDELO AA P. COLAROSI AA S.S. GILE AA S.W. CUFFIN AA R.E. COVEN AA L.L. GREEN AA M.E. CREEL AA S.N. CROSS FN W.T. CRONE, III AA



F.L. CURRY AA J. DALE AA R.D. DAUGHERTY SD R.D. DAVIS AA E.L. DAVIS AA L.R. DAVIS AN D.L. DEW AMHAN R.G. DE WITT AIRMAN





R.A. GOTT
AA



W.L. DOUGLAS
AIRMAN



G.A. DEEW
AA



J.T. DODMAN
AA



G.L. DUDLEY
AA



F.S. DUNHAM
AA



W.W. DURN
AA



J.E. DUVAL
AA



M.E. ELLEMAN
AIRMAN



R.R. ELLIS
AA



J.L. ENGLAND
AA



W.O. FERNEAU
AA



G.H. FINCH
YMAN



G.S. FISHER
AA



K.C. FLYNN
AA



J.F. FODD
SR



J.A. FOLSON
AA



R.L. FORNARDTTE
YMAN



G.D. FULK
AA



R.R. FYE
AIRMAN



F.C. GANTER
AA



S.B. GARRIS
AA



W.S. GIBSON
AA



L.C. GOODRICH
YMAN



R.H. GOSS
AA



F.J. GRAMMOND, JR
AA



R.L. GRAVES
AA



A.R. GREGG
SR



A.F. HADD
AA



R.S. HAMILTON
AA



G.L. HARRIS
AA



G.A. HANJALA
AIRMAN



H.L. HAYES
AA



S.C. HAYS
AA



G.M. HEIDER
AA





C.W. HENDSON AA S.W. HERRMANN AA D.R. HINDS AA J.M. HOLBROOK AA C.E. HUFFMAN AA K.E. HUGHES AA R.D. HUGHES AA L.L. HURTER AA J.C. HURT AA



A.L. IMBODEN AA P.L. JENKINS AA J.G. JENKINS AA O.M. JOHANSEN, JR AA J.H. JOHNSON AA J.D. JONES AA M.A. JOSELYN AA J.B. KELLY AA W.L. KLIHEPETER AA



E.V. KLUD AA K.L. KNAPP AA J.A. KRAFT AA S.W. KROES AA T.R. KUHNENBECKER AA J.L. LABEEF AA D.B. LAMB AA T.N. LARROQUE AA K.C. LARSON AA



J.E. LEIS ATNAN A.M. LUCAS AA R.L. MANDIGO AA J.M. MARKOVICH AA J.W. MARTIN AA W.L. MASON AA F.M. MAYHEW AA S.B. MCABEE ADNAN R.G. MCATEE AA



M.L. MC CLAIN AMEAN M.L. MC DANIEL, JR YWER S. MC GILICUDDY AA S.E. MCKAY AA W.L. MERCHANT AA F.E. MICHAELSON ADNAN D.E. MILLER AA S.V. NIRDNE AA S.L. MITTS AA



L.E. MORGAN AA P.L. MORRIS AA L.B. MOWER AA H.T. MURPHY AA P.L. MURRAY AA J.E.L. NADAU ADNAN K. HAGLITSCH AA D.R. NELSON AA S.G. NELSON SA



S.G. NORRIS AA F.E. O'HEARN AA H. O'NEAL AA M.S. ORLIK ATNAN A.F. PALMER AA J.M. PATINO AA R.E. PAYNE AA J.J. PERRINE AA J.L. PETERSON AA



A.L. PHILLIPS AA J.L. POOLE AA G.S. POUND AA J.T.E. PRESLEY AA R.J. PRESTON AA R.W. PRICE AZAH W.R. PRICE AA S.H. QUARLES SA





W.D. RALEY AA S.A. RAMOS AA R.G. REESE AA R.D. REINER AN W.A. REYNOLDS AN E.G. RIGGLEMAN AN M.D. ROADRICK AA R.D. ROBERTSON AGRAN R.P. ROSS AGRAN



R.E. SACKA AA R.J. SALVO AN D.L. SCHREIN AHEAD S.R. SCHREINER AN T.L. SCHULZE AA A.H. SCOTT AN N.J. SCOTT AN G.H. SECOR AA A.V. SENZARINO AA



J.B. SERNA AN J.J. SHELOS AA N.H. SHIRLEY AN J.W. SHRADER AA S.P. SINKOVICH AA J.R. SMALL AN E.W. SMITH AN F.L. SMITH AN F.M. SMITH AA



M.D. SMITH AN M.J. SMITH AN M.L. SMITH AA R.N. SOLUM AA J.M. SPILLAN AA T.O. SPONBURGH AA J.E. STALLINGB AA M.S. STARR AA L.J. STAUFFER AA



G.E. STEVARY AN E.L. STINSON AA R.D. STONE AA S.R. STUDER AA S.L. SWARZE AN R.L. TERRY SA E.R. THOMAS AN J.R. THOMAS AA M.L. THOMAS AA



W.R. THOMAS AA M.D. THOMPSON AN J.J. TOMAS AA R.E. TREVATHAN ATRAN S.A. TRUAX SR L.P. TRZEWIECZYNSKI AN S.J. TWO DOGS AA T.L. WALKER ATRAN J.H. WALLER ATRAN



E.L. WARD AN S.G. WATSON AA J.W. WHALER AA S.L. WHEELER AA S.A. WHEELER AA R.S. WHIPPLE AN G.B. WHITE FRAN T.M. WILLIAMS AGRAN M. WILLIAMS AA



L.R. WILSON AN S.J. WORTH AN J.D. WITROW FR D.L. WOODFORD SR J.A. WRIGHT AN P.A. YONK AA R.S. ZIEGLER AA F.J. ZIERLEIN AA



TRAINING SQUADRON THREE



WHERE TO START...



AGAIN?



I SEE!





AFTER I WASH THE CAR,
I'LL FLY



I WONDER...



RIGHT HERE SIR!





C.E. MARRELL LT FLY INSTRUCTOR
 R.M. WEINFELD LT FLY INSTRUCTOR
 R.C. WESTFALL LT FLY INSTRUCTOR
 E.G. WILLIAMS LT FLY INSTRUCTOR
 L.E. WILLIAMS LT FLY INSTRUCTOR
 E.A. WOODALL LT STAGER INST
 J. YABUR JR LT FLY INSTRUCTOR
 J.C. ARNOLD LTJG FLY INSTRUCTOR
 W.L. BARSK LTJG FLY INSTRUCTOR



M.E. BARTYER LTJG FLY INSTRUCTOR
 A.P. BLAKE LTJG FLY INSTRUCTOR
 H.L. BRADLEY LTJG FLY INSTRUCTOR
 F.B. CREAMER LTJG FLY INSTRUCTOR
 L.W. SHAWAY LTJG FLY INSTRUCTOR
 M.R. FIELDS LTJG FLY INSTRUCTOR
 W.C. FISK LTJG FLY INSTRUCTOR
 E.L. FROST LTJG FLY INSTRUCTOR
 L.R. BRISSETT 1/LTJG FLY INSTRUCTOR



W.S. HARVILL 1/LTJG FLY INSTRUCTOR
 H.L. HOCKETT LTJG FLY INSTRUCTOR
 W.B. HOUSEMAN 1/LTJG FLY INSTRUCTOR
 C.M. LA DROIX 1/LTJG FLY INSTRUCTOR
 R.E. LEVY 1/LTJG FLY INSTRUCTOR
 R.W. MAGRIFT LTJG FLY INSTRUCTOR
 H.R. MELENDY LTJG FLY INSTRUCTOR
 S.J. MOORE LTJG FLY INSTRUCTOR
 J.H. MOORE LTJG FLY INSTRUCTOR



L.F. MORTON LTJG FLY INSTRUCTOR
 G.R. SHURA LTJG FLY INSTRUCTOR
 J.M. PALMER LTJG FLY INSTRUCTOR
 S.R. PETERSON 1/LTJG FLY INSTRUCTOR
 S.S. REVIS 1/LTJG FLY INSTRUCTOR
 P.J. SCHMIDTKE LTJG FLY INSTRUCTOR
 A.E. SHIMMER LTJG FLY INSTRUCTOR
 S.W. SMITH LTJG FLY INSTRUCTOR
 S.D. THORNTON LTJG FLY INSTRUCTOR



M.E. DELURY ENS FLY INSTRUCTOR
 G.L. GOTTSCHALK ENS FLY INSTRUCTOR
 F.A. HELLE ENS FLY INSTRUCTOR
 J.L. JAGSON ENS FLY INSTRUCTOR
 T.J. KENNEDY ENS FLY INSTRUCTOR
 T. MARCH ENS FLY INSTRUCTOR
 D.B. MITCHELL ENS FLY INSTRUCTOR
 R.A. OWEN ENS FLY INSTRUCTOR
 G.E. ROSEK ENS FLY INSTRUCTOR



T.W. WRIGHT ENS FLY INSTRUCTOR
 W.H. HARRIS JR ADCS LEADING CHIEF
 S.M. ADAMS AMNC
 W.S. ALMQUIST PNC
 R.J. ARMSTRONG AMNC
 C.T. BOWMAN ATC
 C. CAPRITA AMNC
 S.L. CASSEY AMNC
 G.E. DE GRAPPENREID AMNC



J.A. DENDY AMNC
 J.P. ELPERS AMNC
 M. GALLON ATC
 G.E. GASTON JR AMNC
 J.E. HAYTON SMC
 J.W. HENDERSON AMNC
 J.H. HILL AMNC
 M.R. HOWLEY AMNC
 A.J. HUGHES AGC



J.H. KELLY PNC
 F.J. KENORICK AMSCA
 J.K. KOZAMA AMSCA
 M.E. KULMAN AMNC
 G.Y. LEX ATC
 L.W. LILES AMSCA
 J.C. MERRITT AMNC
 R.T. HAY ATCS





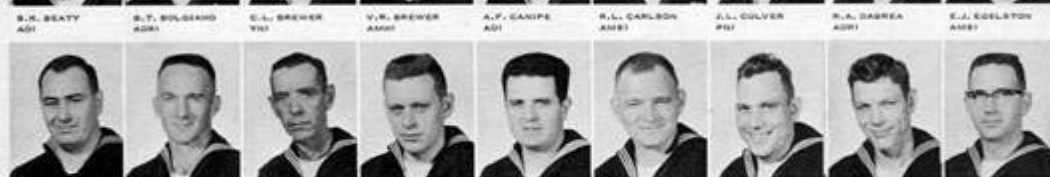
L. HIGDON ADRG A.M. FRASER ADRG F.W. PRICE ADRG S.C. ROGERS ADRG L.B. RUSSELL ADRG J.T. SHEDDEN ADRG J.P. SHELL ADRG W.M. SPERLING ADRG S.R. TURNER ADRG



M.T. WALLACE ADRCA W.V. WEST ADRG F.P. WILLIAMS ADRCA H. WILLIAMS ADRG S. ZAGORSKI ADRG S.E. ABRAMS ADRG W.B. ADEN ADRG L.W. ANSLIN ADRG S. AUERSBACH ADRG



S.K. BEATTY ADRG S.T. BOLDHARD ADRG E.L. BREWER ADRG V.R. BREWER ADRG A.F. CANIPE ADRG R.L. CARLSON ADRG J.L. CULVER ADRG R.A. DABREA ADRG E.J. EDELYN ADRG



S.M. ELSEN ADRG L.F. ENSLEY ADRG W.W. FITZWATER ADRG S.S. FRASER ADRG T.A. FURCO ADRG J.F. GILMER ADRG W.C. GRAHAM ADRG S.R. HALE ADRG S.M. HARLESS ADRG



R.L. HELLEN ADRG J.H. HELTON ADRG W.C. NICHMAN ADRG W.L. JONES, SR ADRG W.Y. KING ADRG S.R. ADSTER ADRG M.J. KRAFT ADRG L.E. LARSON ADRG W.L. LILLIE ADRG



J.B. LOMB ADRG S.A. LOCKHILL ADRG J.E. MCKEE ADRG S.M. MERIER, JR ADRG L.D. MILLER ADRG J.F. REA ADRG R.W. HOLTE ADRG J.L. HOWELL ADRG S.E. OSWALD ADRG



M. KAPPADASS ADRG M. PHILLIPS ADRG W.E. RATLIFF ADRG A.W. REA ADRG E. RICHARDSON ADRG P.L. ROGERS ADRG K.S. SCHULTZ ADRG L.W. SHOFNER ADRG W.L. SIMMONS ADRG



J.F. SKETCHLEY ADRG S.R. STEPHENS ADRG W.W. STYCE ADRG R.F. SUMMERS ADRG R.A. TORRACH ADRG S.L. VERRALE ADRG E.H. WALTERS ADRG T.W. WILLIAMS ADRG





A. T. WILSON ADI
 R. L. ADDINGTON ADM2
 S. R. BENNETT AMB2
 S. L. WILLS AT2
 L. W. BOYDE AMB2
 J. G. BRADLEY ADM2
 R. E. BRADY ADI
 W. C. BROLEKJ ADI
 S. BROADS ADM2



J. P. BRYFONERJ ADM2
 J. D. CABLE BT2
 L. W. CLARY ADM2
 S. D. CLEGG ADM2
 R. T. CUMMINGS AT1
 S. H. DUBOSE ADI
 R. N. EATON AMB2
 S. M. EVANS ADM2
 R. L. FLEET AT2



R. E. BARNER ADM2
 J. D. GARRETT ADI
 M. EBBSON ADI
 S. A. GREEK ADM2
 L. W. GRIEKS ADM2
 S. H. GROOVER ADM2
 A. H. GUNLJR ADM2
 J. C. HANROP ADI
 J. L. HARPER JR ADM2



J. W. HARRIS AMB2
 S. HAYTON ADM2
 F. J. HAVERKAMP ADM2
 S. L. HORNOR AMB2
 R. F. HUGHES ADM2
 J. L. JACKSON AMB2
 S. B. KELLER AMB2
 S. R. KENNEL AMB2
 S. E. KIDWELL PBI



L. D. KOPFAND AMB2
 J. M. KULCAR ADM2
 S. B. LADDIN AMB2
 J. D. LANNING ADM2
 S. W. LAWRENCE ADI
 S. E. LYON AT1
 S. R. MADR PBI
 S. MC ATTEE ADM2
 A. E. MC INNES ADM2



S. E. MC LAMB AMB2
 L. R. MOORE ADM2
 P. R. MYERS ADM2
 S. R. NANCE ADM2
 S. D. NEWTON ADM2
 L. H. NOVAK ADM2
 R. J. PHILLIPS AE2
 J. L. PRIDE ADM2
 R. E. QUICK AE2



G. E. RAY ADM2
 F. A. REINHOLD ADM2
 A. L. REINIER YW2
 S. R. REINHOLD AMB2
 S. C. RUFAN AMB2
 S. L. SAUL ADM2
 A. A. SCAFFSH ADM2
 R. L. SCHMITT ADI
 J. E. TAYLOR PBI



V. A. UTLEY ADI
 S. D. VAN DIXON AE2
 S. J. VIBSON AMB2
 S. E. WARD ADM2
 R. H. WASHINGTON ADM2
 L. WASHINGTON AMB2
 L. WAY ADM2
 R. L. WEINMANN AT1



V. A. UTLEY ADI
 S. D. VAN DIXON AE2
 S. J. VIBSON AMB2
 S. E. WARD ADM2
 R. H. WASHINGTON ADM2
 L. WASHINGTON AMB2
 L. WAY ADM2
 R. L. WEINMANN AT1





J.S. WELCH
ADM2

S.R. WHITE
ADM2

E.W. WOOD
ADM2

S.F. EUCHAR
ADM2

R.V. AELLO
ADM2

J.O. ARNOLD
ADM2

G.M. ASHMORE
ADM2

T.A. BARRETT
ADM2

R.S. BARRETT
ADM2



R.L. BARRY, JR
ADM2

G.V. BENTLEY
ADM2

J.E. BERRY
ADM2

R.L. BOWER
ADM2

G.V. BROWN
ADM2

G.M. BROWN
ADM2

M.C. BROWNING
ADM2

V.T. BURSON
ADM2

G. CALDWELL
ADM2



F.H. CALLAWAY
ADM2

R.W. CASSMAN
ADM2

W.L. CHANDLER
ADM2

S.L. CLINE
ADM2

J.A. COVER
ADM2

W.S. DAVIDSON
ADM2

L.L. DOGLER
ADM2

J.P. DOLING
ADM2

J.A. DRISCOLL, JR
ADM2



R.J. ENSTROM
ADM2

E.M. FESS
ADM2

L. FILIPPA
ADM2

W.A. GEORGE
ADM2

J.A. GIBSON
ADM2

R.E. GOODARD
ADM2

V.L. GUSTAFSON
ADM2

W.O. HADLEY
ADM2



IT'S FIXED SIR!



LOTS OF LUCK!



BACK ALREADY?





A.D. HALL PR3
 K.J. HANI AD3
 C.M. HARPER AD3
 L.D. HARRIS AD3
 K. HENR, JR AD3
 S.R. HENSON AD3
 L.D. HOWELL AT3
 S.F. HURRICUTT AD3
 J.W. JACKS AT3



L. JONES PR3
 S.V. KERR AE3
 S.M. KING AM3
 R.R. LESARE AM3
 F.T. LEWIS AE3
 W.A. LUCAS AD3
 S. MAXWELL AD3
 W.E. MC BRIDE AD3
 J.L. MC GORY AE3



J.V. MILLER AM3
 W.R. HILLS AD3
 R.T. MOLONEY AE3
 A.S. MORALES BS3
 R.D. MOREFIELD AT3
 S. MORTENSEN AD3
 S.J. POWELL, JR AD3
 G.W. REED AD3
 G.H. RIVERS AM3



S.B. ROBINSON AD3
 R.J. SALTERRE AM3
 S.V. SMALL AM3
 J.A. SMITH PR3
 J.J. STELMACH AM3
 G.P. STONERHOUSE AD3
 S.W. TAYLOR AD3
 R.R. THOMPSON AD3
 S.T. THOMPSON SM3



A.R. THYOT AD3
 M.D. TORRENCE AE3
 M.L. VRELETAD AM3
 L.W. TRUAK AM3
 A.J. TURBOW AM3
 R.C. VAREPS AT3
 L.J. BOEGER AM3
 J.P. WAINWRIGHT AD3
 L.R. WALTON YN3



T.L. WATT AM3
 H.H. WILKINSON AD3
 C.E. WILLIAMS, JR AD3
 J.P. WILLIAMS AM3
 A.A. WOODGURY AD3
 W.E. WORRELL AM3
 E.H. ADAMS AA
 J.W. ADAMS AA
 E.L. ALEWINE AM3



A.M. ALLEY AM3
 L.D. ALLISON AA
 J.J. ANDREWS AA
 R.H. BARRIER, JR AT3
 J.E. BAUGHARTNER SA
 S.E. BEESER AA
 R.H. BENNER VNSH
 S.C. BENNETT AD3
 G.F. BONIS AA



K.W. BENDEL AA
 T.D. BETHA AA
 C.R. BLAKE AA
 G.L. BONNELL AA
 P.J. BOWLD AA
 G.J. BORLAND AA
 G.W. BOUYER AA
 W.B. BRAME AA





R.A. BRAVE AA L.R. BROCKMOLLER AA M.N. BROOKS AA J.C. BROOKS AA C.F. BROWN AA J.E. BROWN AGRAN S.B. BUZEWSKI AA D.M. BURY AA R.E. CARALAN, JR AA



G.L. CAPPS AA T.F. CHARLES AGRAN R.H. CLARK AA C.F. COHSE AA S.S. COOK AA J.D. COWLEY AA H.R. COX AN J.F. CROCKER AA P.J. CURTIS AA



R.F. DALLEBAKHOFF AGRAN R.W. DEAN AA D.E. DESSS AA R.L. DESSS AGRAN J.D. DOONAN, JR AN S.E. DONGLAS AGRAN C.J. DRIVER AA G.L. DUGGER AA R.G. DUGGER AA



S.P. DORN AGRAN L.J. EDGAR AA L.F. EDWARDS SN C. EDWORTHY SN J.M. EUBENBARY SN J.L. ELLER AGRAN J.E. EMERSON AN S.L. ERNST AA M.C. ERTL AGRAN



R.L. ESPOSITO AA F.F. FADUE AN S.P. FARRAR AA A.F.V. FASANO, JR AA G.L. FERGUSON AN G.R. FISHER AGRAN W.R. FOLMAR AGRAN T.A. FORD AN G.E. FRY AA



L.P. FRITZ AGRAN V.C. GALLASHER AA S.E. GALLOWAY AA H.E. GARAY SN J.A. GARCIA AA S.E. GARYIN AA S.M. GENTILE AA R.J. GERMING AGRAN W.F. GETTY AGRAN



R.A. SILBERT AA G.S. STEVENS AGRAN R. SOWS AA S.J. SODGE AGRAN P.S. SOUTHWORTH SN H.C. SWENTNER AA G.L. WALL AGRAN R.J. WALLBURTON AA P.G. WAMEL SN



J.A. HAMMER AA S.B. HANSEN AA T.G. HAYS AGRAN L.W. HAYES AGRAN S.J. HEBERTER AA C.W. HOLLAND AGRAN M. HOWARD AA S.H. HOYT AGRAN





W. E. MULL
AA

W. F. ERWIN
AA

W. A. JENKS
ADMAN

R. G. JENNINGS
AA

J. A. JENSEN
AA

D. A. JOHNSON
AA

J. W. JOHNSON
AA

R. B. JOHNSON
AA

R. L. JOHNSON
ADMAN



M. R. JONES
AA

P. W. JONES
AA

H. JORDAN
AA

J. A. KELEHER
AA

D. E. KIDWELL
AA

J. F. KIRWIN
ADMAN

R. W. KNOX
AA

W. L. KRUGER
AA

M. S. KYASKA
AA



A. S. LANKIN
AA

L. R. LANGSTON
ADMAN

J. R. LANTON, JR
ADMAN

E. S. LEEK
AA

S. R. LEEBMAN
ADMAN

L. S. LEV
AA

R. J. LITTMAN
AA

G. M. LLOYD
AA

R. J. LOWRY
FA



D. E. R. LYNN
AA

C. MAHARRA
ADMAN

R. S. MALINA
ADMAN

M. MARCHETTI
AA

J. MAYER
ADMAN

T. E. MC CLENNAN
AA

J. P. MCCOY
AA

W. K. MC GURE
AA



THERE'S THE TROUBLE.....



HOLD IT NOW...



IT'S SOMEWHERE UP THERE!





P. E. MC GUIRE AA T. J. Mc MILLAN AA S. P. Mc RAMARA AA S. HENDOLEKA AA R. L. HENEFEE, JR AA E. A. HILBRANDT AA R. R. MILLER AGRAN S. A. MILLER, JR AGRAN A. L. MOELLER AA



R. MOORE, JR AA R. L. MOORE AA R. L. MOORE AGRAN E. T. MORTON AA S. J. MURPHY AA R. J. MURPHY AA J. A. NABERS AGRAN R. S. NANCARROW AA S. NELLI AA



E. S. NELSON AA E. D. NOTHURFT AA M. W. OLSON AGRAN S. L. OWEN AA S. L. OWEN AA R. E. OWEN AA W. B. PALMER AA A. R. PAVLISI AGRAN F. J. PELOWSKI AA



J. B. PENDING AGRAN J. E. PERKINS AA S. L. PHILLIPS AA S. J. PLATONISKI AGRAN S. L. PODDOW AGRAN R. G. PLOTNER AA S. T. POLLOCK AA S. R. POSBY AA



WAKE UP CHARLIE!



RIDE 'EM COWBOY!



COME OUT...HERE...



M.P. POWELL AA M.L. PREST AGRAN J. PUFFAN, JR AA S.L. PURDELL AGRAN S.M. RABORN AGRAN S.A. SAGDALE AGRAN S.T. KEEB AA A.W. ROBINSON, JR AA S.H. ROYALL AA



J.M. ROSE AGRAN T.L. ROWE AA S.L. RUPPE AA F.R. RUST AA S.T. RUTLEDGE AGRAN S.K. SALMON AA J.C. SAM AGRAN S.W. SAMMONS AA S.L. SAWYER AA



S.C. SCHEDDMAN AA T.R. SCHELLER AA S.D. SCHNEIDER AA S.G. SCHREIBER AGRAN A.F. SCHWAMBERGER AA R.H. SCOTT AA S.E. SHANNON AGRAN J.N. SHAWERS AA S.L. SHYTLER, JR AA



S.A. SIMPSON AGRAN W.D. SIKER AGRAN S.D. SMITH AA S.J. SMITH AA S.H. SLOUGH AA S.P. SPOONER AA S.P. STAFFORD AA S.J. STANLEY AA J.A. STEGNER AA



F.T. STONEY AA S.L. STRADER AA S.D. STRICKLAND AA J.H. STRICKLAND AA S.D. SWESER, JR AA S.L. TACK AGRAN S.E. TALLENT AA S.C. TANNER AA S.A. TAYLOR AA



S.W. TAYLOR AA S.D. TERREAN AA S.S. THURMOND AGRAN J.P. TONEY AGRAN S. TORAN AGRAN A.L. TRAHAN AA S.C. TRAUTMAN AA S.P. THOMAS AA S. TURNER AA



S.L. VANCE AA J.P. WALKER AA S.L. WAYSON AA S.M. WEDMANN AGRAN A.L. WILBER AA W.P. WILD AA S.J. WILDER AA J.J. WILLIAMS AA S.E. WILLIAMSON AGRAN



S.W. WINTERS AA T.A. WINTERS AA C.E. WITHROW AA S.W. WOOD AA S.L. WRIGHT AA S.L. WYMER AGRAN J.S. YOUNG AA J.R. YOUNG AGRAN





ADVANCED TRAINING SQUADRON SIX



R.A. HOOVER, JR.
COR
EXECUTIVE OFF



R.M. BATES
LCDR
ADMIN OFFICER



W.J. LONGFELLOW
MAJOR, USMC
TRAINING OFFICER



C.N. MESSNER
LCDR
MAINT OFFICER



R.B. MOORE
MAJOR, USMC
ASST'Y TNG OFF



R.W. ALTON
LT, USNPS
DIVISION OFFICER



R.M. ANDERSON
LT, ASSISTANT
TNG ASST OFF



D.F. BARNHART
LT
FLT INSTRUCTOR



R.C. BOLENJACK
LT
FLT INSTRUCTOR



R.G. BRANSCOMB
LT, ASST STAGE
STANDARDIZATION



R.E. BROWN
CAPTAIN, USMC
MATERIAL OFF



R.B. CASTLE
LT, ASST INST
TRAINING



W.R. CARNEY
LT
TRAINING ASST



C.A. CHARNICK
LT, ASSISTANT
SCHEDULES



R.E. DAVIS
LT, INSTRUMENT
SVC INFO OFF



A.J. DAVISON
LT, INSTRUMENT
TRAINING OFFICER



R.W. DUFFINSEY
1ST LIEUTENANT
FLT INSTRUCTOR



C.A. ELLIOTT
LT
FLT INSTRUCTOR



R.A. ENGELKING
CAPTAIN, USMC
SCHEDULES OFF



J.R. EVANS
CAPTAIN, USMC
LEGAL OFFICER



A.L. FELTEN
CAPTAIN, USMC
STAGE STYEN OFF



D.F. HAYNES
LT
PERSONNEL



S.H. HITCHCOCK
LT, ASSISTANT
MAINT OFFICER



D. LUCHRING
LT
SIS



R.C. MAYSEE
LT
FLT INSTRUCTOR



R.S. MITCHELL
CAPTAIN, USMC
SCHEDULES OFF



R. MYSER
LT, ASSISTANT
ADMIN OFFICER



A.G. NICHOLS, JR.
CAPTAIN, USMC
MATERIAL OFF



W.J. OVERMAN, JR.
LT
LEADERSHIP OFF



R.J. PROSSER
LT, ASSISTANT
MGT CONTROL OFF



C.W. SAMUELSON
LT, ASSISTANT
MAINT OFFICER



E.L. SCHERWELL
LT
FLIGHT OFFICER



V.M. SELVIS
LT, ENLISTED
PERSONNEL OFF



R.O. SOWLEY
LT
SUT OFFICER



W.W. STARK
LT
BARRACKS OFF



J. WASHENYECK
LT, STEN
DIVISION OFFICER



G.A. RINKER
1/LT, USMC
SCHEDULES OFF



W.F. OSBORN
1/LT, USMC, ASST
TNG ASST OFF



L.V. RAWLINGS
LT, ASSISTANT
AVN SAFETY OFF



R.C. SMITH
CWO(D-1)
QUALITY CON OFF







STEADY THERE!

I'VE GOT IT...

SHOOT!

OH---TO RELAX!



| | | | | | | | | |
|---|---|---|---|--|---|---|---|---|
|  |  |  |  |  |  |  |  |  |
| S.R. D'ANDREA ADM | E.S. EVANS ADM | S.L. FOSTER ADM | W.P. FREEMAN ADM | W.F. GORSETT ADM | S.L. SURKEY ADM | G. HENSON, JR. ADM | W.G. WILLARD ADM | A.L. PHILLIPS, JR. ADM |
|  |  |  |  |  |  |  |  |  |
| H. PORTER ADM | S.W. PECK, JR. ADM | G.A. ROBERTS ADM | R.G. SURRATT ADM | S.L. VAN DROLL ADM | E. WILLIAMS, JR. ADM | J.M. ALLEN ADM | G.L. SPOMER ADM | F.E. SYKES ADM |
|  |  |  |  |  |  |  |  |  |
| J.W. COKER ADM | E.E. DALLAS ADM | S.L. DAVIS ADM | R.E. DILL ADM | R.E. HARRISON ADM | G.S. HODDER ADM | P. KING ADM | N.V. LANDELY ADM | P.V. LONG ADM |
|  |  |  |  |  |  |  |  |  |
| | F.E. MILLS ADM | N. MORRIS, JR. ADM | S.L. NEWTON ADM | N.P. PETRUSKIE ADM | S.A. PICARDI ADM | S.L. SCARBOROUGH ADM | G.W. SCHINDLER ADM | |



R.L. SIMMONS AMJ W.W. SPEER AEJ J.F. ST. CLAIR ATN F.D. SUITS ADRI R.H. WINTER AEJ S.C. BAKER AN W.A. BAKER AGRAN J.S. BARNETT AA H.P. BEAUREGARD AA



M.J. BOLGER AN R. BOMBA AGRAN S.H. BRISSEY SA R.E. BRUCHMANN PRAN S.F. BRYANT AN J.L. BUCKNEY AGRAN W.T. CAIRNS AA J.T. CONNELLY AA J.C. DAHLSTROM AA



S.A. DAVIS AA R.E. ELLENBURG AGRAN R.S. FORDHAND AGRAN H. FRANCIS, JR AGRAN T.R. GALBRAITH AA C.D. GARRETT AGRAN E.S. GOGGANS AGRAN R.E. GRIM, JR PRAN S.L. HAMBLEN AGRAN



M.L. HANLAW AN R.A. HEYER AA E.C. HENKEL SR J.L. HESTER, JR AA D.J. HEYERSON AGRAN J.W. HOGAN AA S.F. HOUSE, JR AGRAN T.S. JOHNSON AN W.F. JONES AA



A.L. KOENIGSBERG AGRAN L.C. KOVEMAN YNSR F.J. KUSAK AA S.N. LEFFELL SA S.L. LONGORIA SR S.L. MC LAUGHLIN AGRAN J.S. MC NULTY AN E.M. MELTON SR S.L. MERCER AN



D.K. MILER AGRAN S.L. MORRIS AN M.J. MURPHY AGRAN J.L. MURPHY AA E.W. NASH AA E.W. NEE AGRAN W.R. OSLEY SA S.D. PACE SA R.F. PATON SA



J.A. PATTERSON AN J.E. POND, III AN S.L. RAYFORD AN T.C. REED SA S.A. ROSENK AGRAN J.R. ROSENBAUM AA S.D. SAMMONS SA S.G. SCHNEIDER AA S.F. SLIGHT AN



S.D. SMITH SA J.L. SMITH SA R.L. SMITH SA S.R. STARKI AA A.J. SYMON AN S.E. THOMPSON AN F.L. THREE AA



STUDENTS



W.B. ANDERSON LTJG P.L. ANGIVA LTJG T.S. BRUGHAM LTJG R.L. BURGARD LTJG R.A. BURY LTJG R.O. BUTTRICK LTJG L.E. BYERS 1/LT,USMC J.H. COOTICH LTJG T.L. DI BIASE LTJG



P. GUSTIS 1/LT,USMC R.A. FERGUSON LTJG D.S. FRYE LTJG J.A. GIDDINGS 1/LT,USMC R.A. GINS LTJG L.H. HARRING LTJG J.A. HART 1/LT,USMC R.P. HELLER 1/LT,USMC E. HERNANDEZ 1/LT,USMC



D.A. HUGH LTJG R.J. IRVING, JR 1/LT,USMC P.L. JOHNSON 1/LT,USMC T.S. KENEFIGH LTJG G.M. LEE 1/LT,USMC W.J. LIVINGOOD 1/LT,USMC J.D. LONG LTJG J.P. LUSHERN 1/LT,USMC R.B. MALDONADO LTJG



J.M. MATTIACE 1/LT,USMC J.A. MAULSON 1/LT,USMC R.E. MC LAREN LTJG W.C. MC MINLER 1/LT,USMC A.E. MICHEL LTJG B.C. MILLER 1/LT,USMC W.L. NEAL LTJG E.A. OKAYA 1/LT,USMC S.R. REAR, JR 1/LT,USMC



R.L. REISMAN LTJG J.T. REYNOLD 1/LT,USMC R.L. SHAPIRO 1/LT,USMC J.E.B. STUART LTJG W.L. SWETCH 1/LT,USMC A. VASQUEZ 1/LT,USMC S.A. WARMAN 1/LT,USMC C.D. WHITMAN LTJG W.R. ABEL ENS



S.L. ADDISON ENS R.H. ANTHONY ENS A.T. ANDO ENS G.T. ARMSTRONG 1/LT,USMC J.R. ARTHUR ENS R.V. AVERITT ENS A.J. SANFORD ENS W.C. BARRISH, III ENS J.L. BARDUSSE 1/LT,USMC



M.J. BARTOLDIENS ENS S.L. BORN ENS F.J. BENDER ENS M.L. BERRY ENS R. BEMAROVICH 1/LT,USMC S.D. BILLINGS ENS J.P. BLAKEY, JR ENS R.J. BLAYLOCK ENS



W.A. BLEE
ENS
J.J. BLEY
2/LT.USMC
W.J. BOENNER
ENS
W.C. BOND
ENS
F.L. BONNER
ENS
F.L. BOOM
ENS
R.E. BOOTH
ENS
A.P. BORRIS
ENS
R.A. BOUTLAND
ENS



C.H. BOWERS
ENS
R.A. BRACY
2/LT.USMC
L.D. BRADY JR
ENS
M.E. BRANDEN
2/LT.USMC
R.T. BRANDON
ENS
P.D. BREITHAUFF
ENS
P.D. BROGGER
ENS
E.T. BROWN
ENS
A.L. BRUYERE JR
2/LT.USMC



F.D. BRYANT
2/LT.USMC
L.D. BRYANT JR
ENS
W.L. BUCKMAN
2/LT.USMC
S.W. BURFORD
ENS
R.W. BURNAND JR
ENS
L.D. BURNS III
ENS
W.T. CALLAWAY JR
ENS
J.A. CARLSON
ENS
R.F. CARLSON
ENS



W.E. CARR JR
ENS
C.V. CHRISTENSEN
ENS
M.O. CLABORNE
2/LT.USMC
A.E. CLICKNER
ENS
S.W. CLIFFORD
2/LT.USMC
R.J. COREY
ENS
W.E. COVINGTON
ENS
R.W. CRANEY
2/LT.USMC
T.P. CRANDA
2/LT.USMC



D.S. CRIGTON JR
2/LT.USMC
S.W. CROSSLAND
2/LT.USMC
A.M. CROMLY
ENS
A.F. CUPENIS
2/LT.USMC
E.E. DABBS
ENS
D.R. DALL
ENS
R.E. DAVIS
2/LT.USMC
A.F. DEMP
ENS
J.J. DE MARTIN
ENS



C.O. DENISON
ENS
W.S. DE REEMER
ENS
R.K. DEVERO
2/LT.USMC
A.R. DEVINE
2/LT.USMC
S. DIEM
ENS
C.J. DIETER
ENS
R.L. DITCHNEY
ENS
V.O. DONILE
2/LT.USMC
A.V. DOWNING
ENS



T.P. DOYLE JR
ENS
R.H. DRESSER
ENS
R.E. EBERHOL
ENS
N.E. ERLERT
2/LT.USMC
S.R. ELLIOTT
2/LT.USMC
R.R. ELLIOTT
ENS
A.M. ELLIS III
ENS
R.A. EMERSON
2/LT.USMC
D.W. EMBROOK
ENS



L.E. EWERT
ENS
L.J. FARRELL
2/LT.USMC
W.L. FEAKES
2/LT.USMC
A.W. FISHER
ENS
L.J. FITZMAURICE JR
2/LT.USMC
W.K. FLYNN
ENS
R.A. FOLEY
2/LT.USMC
C.M. FORBES
ENS
P.S. FOWLER
ENS



J.C. FRANKLE
1/LT,USMC

G.R. FREDERICKSON
ENS

F.C. FROMMANN
1/LT,USMC

G.C. FULLER
ENS

R.H. FULLER
ENS

J.M. FULTZ
ENS

R.E. GARLICK
ENS

G.S. GARRIGO
ENS

G.R. GARRICK
ENS



J.M. GERBER
1/LT,USMC

L.M. GENDEN
ENS

P.H. GIBBSON
ENS

F.H. GILSON
1/LT,USMC

G.F. GONZALES, III
ENS

R.S. GORDON
ENS

R.H. GRAHAM, JR
ENS

R.J. GRANGER
1/LT,USMC

L.R. GRANT, II
ENS



W.T. GRAVES
ENS

R.L. GREENE
1/LT,USMC

W.J. GREGORY
1/LT,USMC

A.W. GROMAN, JR
ENS

R.A. GRUIROWSKI
ENS

R.A. GUIDE
1/LT,USMC

R.J. GUYON
ENS

J.M. HALVERSON
ENS

R.G. HANLEY
ENS



R.R. HARDY
1/LT,USMC

O.M. HARPER, JR
ENS

R.N. HARVEY
ENS

G.F. HAYES
ENS

R.N. HEH
ENS

R.L. HERRY, JR
1/LT,USMC

A.B. HEYE
ENS

R.E. HIGGINBOTHAM
ENS

F.Y. HILL, JR
1/LT,USMC



D.D. HILLER
1/LT,USMC

R.A. HOBSON
1/LT,USMC

R.H. HODGE
1/LT,USMC

J.W. HUGHES
ENS

R.L. HULL
ENS

F.J. HYMEL
ENS

I. INGRAM
ENS

G.A. IRVING
ENS

O.W. JAMES
ENS



A.C.A. JAMPOLER
ENS

J.H. JOHNSON
ENS

R.E. JOHNSON
1/LT,USMC

R.W. JOHNSON
ENS

T.P. JOHNSTON
ENS

R.L. JOHNSON
ENS

F.P. KALBERER
1/LT,USMC

W.P. KANTOR
ENS

W.L. KAPP
ENS



L.D. KEMPLE
ENS

A.Y. KEITH
ENS

G.H. KELLY
1/LT,USMC

R.T. KELLY
ENS

J.P. KERRY
1/LT,USMC

R.A. KIDD
1/LT,USMC

R.G. KLEBER
ENS

R.H. KLIPPERT, JR
ENS

G.L. KRUGER
ENS



E.S. KUMMER
ENS

F.H. KURATH
ENS

J.E. LACREY
ENS

J.L. LANK
ENS

G.R. LEE
ENS

W.F. LEE
ENS

J.P. LEDGE
ENS

R.D. LEWER
1/LT,USMC

G.V. LIND, JR
ENS



T.M. LESTON ENS
 P.T. LINDSALE ENS
 S.M. LOWE LTJ/USMC
 L.G. LUBBAUGH ENS
 S.S. HACKEY ENS
 J.C. HAKEU ENS
 E.C. MARINE ENS
 R.P. HALEY LTJ/USMC
 J.W. MAPLER LTJ/USMC



S.O. MAXWELL ENS
 T.J. MCCLARD ENS
 S.J. MCDERMICK LTJ/USMC
 J.P. MC CUTCHAN LTJ/USMC
 J.R. MC BRIDDER ENS
 M.R. MC MURRAY ENS
 J.H. MEDON LTJ/USMC
 J.S. MEDWING ENS
 J.T. MEEVER ENS



S. MILLER ENS
 S.D. MOLLNER LTJ/USMC
 S.L. MONYER ENS
 S.D. MOODY ENS
 R.R. MORA LTJ/USMC
 R.W. MORRIS LTJ/USMC
 W.C. MURKAY ENS
 S.A. MURSEBERGER ENS
 S.J. MURCHLAND ENS



R.J. MURPHY ENS
 T.E. MURRAY ENS
 S.P. MYERS LTJ/USMC
 S.L. NALE LTJ/USMC
 R.P. NEE ENS
 R.L. NEILL ENS
 R.J. NELSON ENS
 J.L. NEWBERRY JR ENS
 S.D. RICKERSON ENS



L. NIKOLAI LTJ/USMC
 K.M. NOVAK ENS
 R.T. NORWELL ENS
 S.S. NYSTRON ENS
 E.W. OAKES ENS
 R.T. OLSON ENS
 S.P. OSTEN LTJ/USMC
 J.W. OVERTREE ENS
 S.A. PAGE ENS



M.E. PADGUGAN LTJ/USMC
 W.L. PARKER LTJ/USMC
 S.A. PEREZ LTJ/USMC
 E.S. PERKINS ENS
 V.L. PERCE ENS
 R.A. PETERSON ENS
 G.B. PHILLIPS ENS
 S.M. PLYLER JR ENS
 J.E. PONDY LTJ/USMC



R.M. POLIANGUS LTJ/USMC
 R. PORESI ENS
 J.L. POYNOR ENS
 A.M. PREVOST LTJ/USMC
 J.V. RANDELL ENS
 J.P. RAY LTJ/USMC
 P.M. REBER ENS
 R.G. REDMON ENS
 F.A. REED ENS



S.A. REED ENS
 R.R. REED ENS
 S.A. REMBOLD LTJ/USMC
 S.C. REYNOLDS ENS
 R.A. RIVOLUIS ENS
 F.A. RIDDLE JR ENS
 F.S. RIEHL ENS
 S.A. RIBER ENS
 K.C. RIBTYE LTJ/USMC



The Quarter!!

| | | | | | | | | |
|---|---|---|---|--|---|---|---|---|
|  |  |  |  |  |  |  |  |  |
| D.W. RITT ENS | M. ROBERTS ENS | E.A. ROBERTS, III ENS | J.A. ROCKHOLD ENS | J.S. RODENBEH I/LT.USMC | J.L. ROSSI ENS | F.F. RUSSELL ENS | R.S. SALZMAN ENS | J.P. SANDERS ENS |
|  |  |  |  |  |  |  |  |  |
| W.L. SANDERS I/LT.USMC | E.A. SAULEY ENS | J.B. SCANLON ENS | S.R. SEMENCK ENS | S.W. SCHILLING ENS | R.G. SCHILTE I/LT.USMC | J.H. SCHWIMMER I/LT.USMC | R.P. SCHWARTZ ENS | L.L. SCOTT ENS |
|  |  |  |  |  |  |  |  |  |
| R.W. SEBERT I/LT.USMC | H.A. SEIDELHUSER ENS | S.J. SEWELL I/LT.USMC | J.P. SHAFER ENS | E.B. SHAW ENS | J.H. SHORT ENS | R.L. SIGARS I/LT.USMC | D.P. SIMMONS, JR ENS | S.M. SMITH, JR I/LT.USMC |
|  |  |  |  |  |  |  |  |  |
| L.A. SMITH ENS | S.D. SMITH ENS | R.L.B. SMITH ENS | R.A. SORWELL I/LT.USMC | J.H. SPEIGHT, JR ENS | S.P. STEPHAN I/LT.USMC | W.C. STYLWELL ENS | W.T. STOVALL ENS | H.L. STOWERS, JR ENS |



J.L. STRICKLAND ENS
J.W. STRICKLER ENS
M.V. SULTAN 1/LT.USMC
R.F. SWEAT ENS
A.J. SWETT 1/LT.USMC
J.W. TALBOT ENS
R.G. TANNER 1/LT.USMC
L.S. TAYLOR 1/LT.USMC
S. THORNTON ENS



R.L. THOMAS 1/LT.USMC
L.E. THOMAS, JR ENS
D.P. TICKLE 1/LT.USMC
T.H. TIFF 1/LT.USMC
R.C. TINSLEY 1/LT.USMC
G.E. TINDALE, JR 1/LT.USMC
R.D. TOMES ENS
C.A. TOSI, JR ENS
J.R. TRITT ENS



E.L. TVEIT 1/LT.USMC
L.R. VAN AUDELE ENS
D.S. YADLJEV 1/LT.USMC
R.E. VARRY ENS
W.A. VEKEMAH ENS
S.B. VIRCENT ENS
C.R. VINCEN ENS
F.E. VISCONTI 1/LT.USMC
W.T. VOSS 1/LT.USMC



F. WAGNER ENS
R.J. WAGNER 1/LT.USMC
T.F. WALBY 1/LT.USMC
R.W. WALKER ENS
S. WALSH ENS
J.C. WATFORD, JR ENS
R.W. WATLER ENS
A.D. WEBB, III ENS
P.H. WEBERLING 1/LT.USMC



J.A. WESSELL 1/LT.USMC
S.E. WHEELER ENS
S.L. WHITE ENS
R.C. WILKESHER 1/LT.USMC
L.R. WILLIAMS ENS
R.H. WILSON ENS
R.L. WILSON ENS
A.J. WINKLER ENS
S.L. WOODS ENS



J.R. WOODS, JR ENS
R.A. ZAPP 1/LT.USMC
ABROWO MAR/CAD
L.S. ADAMS MAR/CAD
R.F. ADAMS NAV/CAD
W.T. ADAMS MAR/CAD
C.G. ANDERSON MAR/CAD
R.D. ANDERSON MAR/CAD
A. ANF NAV/CAD



T.M. ABRAHAM MAR/CAD
T.T. ATTEBERRY, JR NAV/CAD
E.J. AUSTIN MAR/CAD
J.A. BEENE NAV/CAD
J.A. BEAL MAR/CAD
P.E. BENSON NAV/CAD
R.K. BENSON NAV/CAD
R.L. BERTHE MAR/CAD
J.T. BERTRAND MAR/CAD



T.A. BIRD MAR/CAD
R.V. BOLD, JR NAV/CAD
W.C. BOLLINGER NAV/CAD
R.M. BRUNHAVER NAV/CAD
S.L. BUCK MAR/CAD
C.V. CALIA MAR/CAD
R.S. CAMPBELL NAV/CAD
S.L. CARROLL MAR/CAD
P.G. CARROLL NAV/CAD



T.A. BIRD MAR/CAD
R.V. BOLD, JR NAV/CAD
W.C. BOLLINGER NAV/CAD
R.M. BRUNHAVER NAV/CAD
S.L. BUCK MAR/CAD
C.V. CALIA MAR/CAD
R.S. CAMPBELL NAV/CAD
S.L. CARROLL MAR/CAD
P.G. CARROLL NAV/CAD



J.N. CARBOTT MAR/CAD R.E. DECKWYH MAR/CAD F.W. CHAMBERS MAR/CAD L.G. CHERM MAR/CAD G. CHURCH MAR/CAD R.F. CLEMENCE MAR/CAD R.W. CLEMENS MAR/CAD C.F. CLYDESDALE MAR/CAD A.E. COCKMAN MAR/CAD



J.P. COGSHN MAR/CAD R.V. CONWAY MAR/CAD R.L. COOK MAR/CAD J. COOLEY MAR/CAD P.H. COURTNEY MAR/CAD R.E. COX MAR/CAD R.L. CROUCH MAR/CAD W.R. CROWE MAR/CAD P.W. CULWELL MAR/CAD



C.W.G. CURRIER MAR/CAD D.B. DAMROSEH MAR/CAD D.S. DANIELS MAR/CAD S.L. DAVIS MAR/CAD R.S. DEAN MAR/CAD S.M. DEGMANY MAR/CAD F.J. DE FREYAS MAR/CAD M.E. DE FRIES MAR/CAD W.P. DE LAYAN MAR/CAD



L.S. DE VORE MAR/CAD J.A. DE WYSE MAR/CAD R.J. DONNELLY MAR/CAD M.A. DOPSON MAR/CAD J.A. DOWRING MAR/CAD S.P. DRUGINS MAR/CAD J.F. DUK MAR/CAD T.D. DUNS MAR/CAD R.J. DUPUIS MAR/CAD



W.B. DWINELL MAR/CAD J.F. EGAN MAR/CAD W.Y. ELIASON MAR/CAD R.S. EVERTS MAR/CAD S.R. FARABOUGH MAR/CAD T.J. FITZGERALD MAR/CAD R.L. FOLTS MAR/CAD R.W. FORSYTH, JR MAR/CAD J.P. FREEMAN MAR/CAD



J.J. FURER MAR/CAD C.F. GAIL MAR/CAD W.F. GAMBACH MAR/CAD J.H. GARRETT MAR/CAD L.E. GAUTREAUX, JR MAR/CAD V.P. GIDDINGS MAR/CAD R.G. GIBBOUARD MAR/CAD L.P. GLOVER MAR/CAD J.E. GOES MAR/CAD



H.P. GOOD MAR/CAD R.V. GOODALE, JR MAR/CAD J.G. GOODWIN MAR/CAD W.M. GOOLSBY MAR/CAD P.S. GOODRINE MAR/CAD L.S. GRIECO MAR/CAD G.R. GREFFIN MAR/CAD R.L. GROSS MAR/CAD D.E. HAAR MAR/CAD



R.S. HARTFIELD MAR/CAD J.H. HART MAR/CAD R.H. HAUB MAR/CAD J.A. HEIKEN MAR/CAD R.E. HEISTER MAR/CAD G.L. HELLWIG MAR/CAD L.A. HENSON MAR/CAD D.W. HERBERT MAR/CAD A.C. HERTZ MAR/CAD





M. E. HOBBS
NAV/CAD

D. W. HOBBS
NAV/CAD

G. E. HOFFMAN
NAV/CAD

R. L. HORTSMAN
NAV/CAD

R. A. HOSB. III
MAR/CAD

M. E. HOWE
NAV/CAD

R. E. HULL
NAV/CAD

W. R. HURD
MAR/CAD

R. A. HUTCHINSON
NAV/CAD



W. R. INGALLS
MAR/CAD

O. SNYDERSTAD, III
MAR/CAD

A. R. JACOBS
MAR/CAD

J. G. JAEGER
MAR/CAD

R. J. JENSEN
MAR/CAD

E. G. JENNINGS
NAV/CAD

R. JENNINGS
MAR/CAD

A. R. JOHNSON
MAR/CAD

R. D. JOHNSON
MAR/CAD



R. A. JOHAN
MAR/CAD

A. G. JONES
NAV/CAD

R. W. JONES
NAV/CAD

D. H. JUNG
NAV/CAD

T. L. KAY
NAV/CAD

L. L. KEESEY
NAV/CAD

J. C. KERRHNER
MAR/CAD

J. J. KEUTER
MAR/CAD

R. E. KIMMEY
MAR/CAD



E. L. KIRBY
MAR/CAD

J. W. KIVENAV
MAR/CAD

G. A. KLING
MAR/CAD

T. J. KLUG
MAR/CAD

R. B. KYEAR
NAV/CAD

V. M. LA PIERRE
NAV/CAD

R. W. LARSON
NAV/CAD

A. O. LARSON
MAR/CAD

W. R. LAVERTY
NAV/CAD



HMMMMM....



IT SAYS HERE.....





WHICH ONE IS WHICH?



IN THE CORNER.....



THESE LONG HOURS....



D.B. LAYFORD NAV/CAD F.J. LEOPOLD NAV/CAD M.S. LEHNER NAV/CAD J.A. LEBERT NAV/CAD R.C. LETOURNEAU NAV/CAD G.D. LYEAR MAR/CAD R.E. MALDON MAR/CAD L.S. MADLER NAV/CAD C.V. MANAHAN MAR/CAD



D.S. MARQUE NAV/CAD J.H. MARSHALL NAV/CAD M.E. MATHEWY MAR/CAD R.A. MC DANIEL NAV/CAD R.B. MC EACHERN MAR/CAD M.D. MC GEEAN NAV/CAD D.H. MC NAB, JR NAV/CAD P.D. MC TAGART MAR/CAD R.H. MELCHER NAV/CAD



G.F. MILLER MAR/CAD R.A. MILLER NAV/CAD R.A. MILLER MAR/CAD S.L. MINAR MAR/CAD M.D. MOE MAR/CAD R.Y. MONTANA NAV/CAD A.E. MOORE NAV/CAD E.R. MOORE MAR/CAD L.H. MOORE MAR/CAD



S.L. MORALES NAV/CAD L.H. MORAVEK MAR/CAD J.H. MORGAN NAV/CAD P.J. MURPHY NAV/CAD J.H. MORRIS NAV/CAD R.H. MORRISON NAV/CAD G.V. MULLER MAR/CAD J.T. MURPHY MAR/CAD E.L. BELMS MAR/CAD



C.J. NEUBIG MAR/CAD D.F. NICHOLS NAV/CAD R.W. NICHOLS MAR/CAD W.S. NORMAN, II NAV/CAD W.E. NORTHUP MAR/CAD H.J. OLITSKY MAR/CAD K.E. OLSON NAV/CAD D.A. ORZCO NAV/CAD M.O. ORR MAR/CAD



J.W. OTTO MAR/CAD D.J. OWENS MAR/CAD E.L. PARKER, JR NAV/CAD R.T. PARSE NAV/CAD G.L. PETERSON MAR/CAD J.W. PETERSON NAV/CAD J.M. PETROVICH NAV/CAD J.T. PHAREUP, JR NAV/CAD R.L. POWELL MAR/CAD



W.S. PRINGLE MAR/CAD D.E. PUCKETT MAR/CAD R.S. PULLAN MAR/CAD R.E. PULLIN, JR NAV/CAD G.J. RAER NAV/CAD D.E. RAUTIO NAV/CAD E.R. REITS MAR/CAD J.J. RICHARDSON MAR/CAD G.B. RIEHEY MAR/CAD



J.E. RIDGWAY MAR/CAD J.M. RIFKA NAV/CAD L.G. ROBINSON MAR/CAD R.H. RUYER MAR/CAD R.T. RUSSELL NAV/CAD L.G. SAMUELS NAV/CAD J.M. SCHNEIDER NAV/CAD W.L. SCHEFFELMANN NAV/CAD R.L. SEMIOT NAV/CAD



J.E. SCHUBER MAR/CAD E.M. SEIFFERT MAR/CAD R.J. SELLERS NAV/CAD G.C. SHELBY NAV/CAD L.F. SIXTMA MAR/CAD SHAMSDIN ENGINEER D.E. SMITH NAV/CAD L.H. SMITH MAR/CAD M.C. SMITH MAR/CAD



M.J. SMITH NAV/CAD R.M. STEIN MAR/CAD G.L. STEVENSON NAV/CAD J.R. STRATTON MAR/CAD T.F. STRONG NAV/CAD R.A. STYER, II NAV/CAD J.L. SULLIVAN NAV/CAD G.D. SUTPHIN NAV/CAD K.A. TAGGAR MAR/CAD



W.A. TAYLOR NAV/CAD R.B. TENYE MAR/CAD R.F. THAMES MAR/CAD R.P. TOETTCHER MAR/CAD R.W. URMANN NAV/CAD R.A. YAS DIAS MAR/CAD W.A. YEGGHTO MAR/CAD D.E. WALKER MAR/CAD K.C. WEDDLE NAV/CAD



D.G. WEISBER MAR/CAD D.C. WESTPHAL NAV/CAD A.E. WHITE MAR/CAD R.S. WHITE MAR/CAD R.W. WESSE NAV/CAD J.E. WILLIAMS MAR/CAD R.W. WILSON NAV/CAD G.C. WOODRUFF, JR NAV/CAD M.R. WYBES NAV/CAD



EDITORS

LT D.A. Fleming, USN, NAAS
LT W.R. McGehee, USN, VT-2
Capt R.L. Thompson, USMCR, VT-3
LT D. Luehring, USN, VT-6

PHOTOGRAPHY BY:

Army and Navy Publishing Company, Inc.
(a private business enterprise)
Baton Rouge, Louisiana
Photo Lab, USNAAS Whiting Field

STAFF

1st Lt J.F. Luebben, USMC
ENS L.M. Engman, USNR
N/C D.W. Knight, USNR
Valean Vintila, JO2, USN
Diane Levert, JO3, USN
Bonnie Maret, JOSN, USN
Mary Anderson, SN, USN

CARTOONS BY:

Robert Colunga, JO3, USN

